

HP recommends Windows Vista® Business

HP Workstations

Quick Reference Guide

YOU DESERVE A COMPETITIVE EDGE.



CUSTOMER INSPIRED-INNOVATIONS
PROVEN RELIABLE PERFORMANCE
TRUSTED INDUSTRY PARTNERSHIPS

MEET OUR HP WORKSTATION FAMILY—COMPARE FEATURES



HP xw4550

HP xw4600

HP xw6600

Overview	Workstation power uniquely affordable	Affordable innovation with the power to do more	Workspace innovation with commanding performance
Operating Systems			
Genuine Windows Vista® Business 32-bit*	•	•	•
Genuine Windows Vista® Business 64-bit*	•	•	•
• Genuine Windows Vista® Business 32-bit with downgrade to Windows® XP Professional 32-bit custom installed ¹	•	•	•
• Genuine Windows Vista® Business 64-bit with downgrade to Windows® XP Professional 64-bit custom installed ¹	•	•	•
• Red Hat Enterprise Linux® WS 5 64-bit		•	•
• HP Installer Kit for Linux (includes drivers for both 32-bit and 64-bit OS; versions of Red Hat Enterprise Linux WS4 and WSS)	•	•	•
• Certified on Novell Linux Desktop 9	•	•	•
• Red Flag Linux v5 (available in China only)	•	•	
• Free DOS			
Processor/chipset/system bus			
	<ul style="list-style-type: none"> • Second-Generation AMD Opteron™ 1000² Series processors with HyperTransport™ • Dual and Quad Core³ • 1 MB L2 Cache per core • 1000 MHz HyperTransport • AMD 690G with ATI Radeon X1250 chipset 	<ul style="list-style-type: none"> • Intel® Pentium®³ E2000-series⁴ • Intel® Core® 2⁴ Duo E6000-series⁴ • Intel® Core® 2⁴ Duo E7000-series⁴ • Intel® Core® 2⁴ Duo E8000-series⁴ • Intel® Core® 2⁴ Quad Q6000-series⁴ • Intel® Core® 2⁴ Quad Q9000-series⁴ • Intel® Core® 2⁴ Extreme^{5, 6} • 800 to 1333 MHz FSB • Intel X38 Express chipset 	<ul style="list-style-type: none"> • Intel® Xeon®⁵ Series 5200⁴ processor³ 1066 or 1333 MHz FSB • Intel® Xeon®⁵ Series 5400⁴ processor³ 1333 MHz FSB • Intel 5400 chipset
Expansion slots			
	<ul style="list-style-type: none"> • 1 PCIe x16 graphics • 1 PCIe x4 (x1 electrical) • 2 PCI 	<ul style="list-style-type: none"> • 2 PCIe x16 Gen2⁸ Graphics • 1 PCIe x8 (x4 electrical) • 1 PCIe x1 • 3 PCI 	<ul style="list-style-type: none"> • 2 PCIe x16 Gen2⁸ Graphics, • 2 PCIe (x8 mechanically, x4 electrically), • 2 PCI slots
Graphics			
	Integrated		
Dual configuration capability with select cards			
• ATI FireGL V5600	•	•	•
• ATI FireGL V7700		•	•
• NVIDIA Quadro NVS 290	•	•	•
• NVIDIA Quadro NVS 440	•	•	•
• NVIDIA Quadro NVS 450		•	•
• NVIDIA Quadro FX 370	•	•	•
• NVIDIA Quadro FX 570	•	•	•
• NVIDIA Quadro FX 1700	•	•	•
• NVIDIA Quadro FX 3700		•	•
• NVIDIA Quadro FX 4600		•	•
• NVIDIA Quadro FX 4800		•	•
• NVIDIA Quadro CX		•	•
• NVIDIA Quadro FX 5600			•
• NVIDIA Quadro FX 5800			•
Controllers and HDs^{9, 10}			
	<ul style="list-style-type: none"> • Integrated 4-channel SATA 3.0 Gb/s controller with RAID 0, 1 and NCQ; up to 2 drives, 1000 MB max. 	<ul style="list-style-type: none"> • Integrated SATA 3.0 Gb/s (NCQ with 5 internal and 1 external SATA connectors) with RAID, up to 4 drives, 4 TB max.; removable boot drive option 	<ul style="list-style-type: none"> • Integrated SATA 3.0 Gb/s Controller; RAID 0, 1, 5 capability • Up to 3 SATA drives (with the optional optical bay converter kit), or up to 3 of the small form factor SAS drives • 3 TB max
Optical drives¹¹			
• SATA DVD-ROM	•	•	•
• SATA DVD+/-RW Double Layer SuperMulti with LightScribe ^{12, 13}	•	•	•
• SATA DVD+/-RW Double Layer SuperMulti ¹²			
• Blu-Ray Disc DVD+/-RW SuperMulti DL ^{12, 13, 14}			
Communications¹⁵			
	<ul style="list-style-type: none"> • Integrated Broadcom 5755 10/100/1000/4 LAN (PCIe) 	<ul style="list-style-type: none"> • Integrated Broadcom 5755 NetXtreme Gigabit PCIe • Optional Broadcom 5751 NetXtreme Gigabit PCIe 	<ul style="list-style-type: none"> • Integrated Broadcom 5755 NetXtreme Gigabit PCIe • Optional Broadcom 5751 NetXtreme Gigabit PCIe • Optional Intel Pro 1000 PT Gigabit Ethernet Controller (PCIe)

HP Workstations—Pioneering new innovations

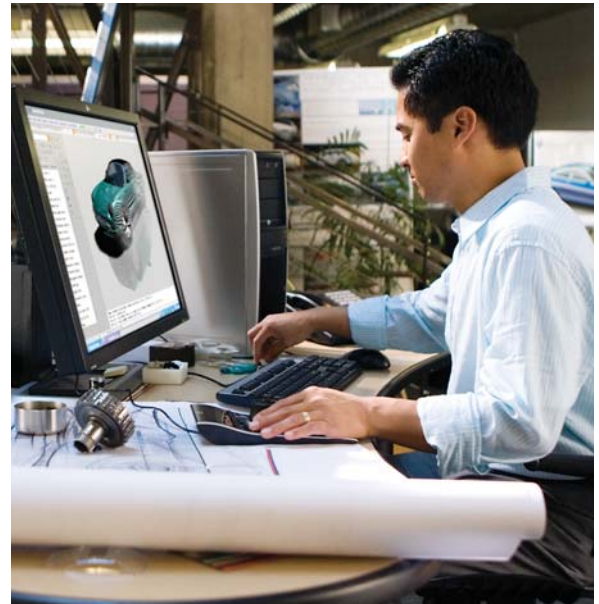
Performance Tuning Framework

Your intelligent interface to the underlying power of HP Workstations

The HP Performance Tuning Framework helps you maximize the performance and reliability of your workstation environment by giving you the ability to discover, optimize and manage your unique combination of hardware, graphics drivers, applications, operating system and other system resources—an exclusive HP software innovation that's included free with every HP Workstation sold with a Microsoft operating system.

Remote Graphics Software

High performance remote access software with a "like local" feel. Get high performance remote desktop access to your 2D, 3D, video, and media-rich applications—on-site or from a remote location through a standard Internet connection. Collaborate with colleagues across geographies, in real-time, using content-rich interactive applications. Sign-in to your remote workstation resources and have the desktop video, keyboard, and mouse follow you to the new access location. Connect a local USB device and have it virtually attach to a remote workstation. Now you can with HP Remote Graphics Software.



Designing for the environment

HP Workstations are advancing the forefront of industry innovation with a firm commitment to reduce the environmental impact of computing. With optional ENERGY STAR® configurations and 80 PLUS power supplies standard on all new platforms, HP Workstations provide a energy-efficient, conveniently recyclable and environmentally responsible solution.

Certain Windows Vista product features require advanced or additional hardware. See <http://www.microsoft.com/windowsvista/getready/hardwarereqs.mspx> and <http://www.microsoft.com/windowsvista/getready/capable.mspx> for details. Windows Vista Upgrade Advisor can help you determine which features of Windows Vista will run on your computer. To download the tool, visit <http://www.windowsvista.com/upgradeadvisor>.

¹ Windows Vista Business disk also included for future upgrade if desired. To qualify for this downgrade an end user must be a business (including governmental or educational institutions) and is expected to order at least 25 customer systems with the same custom image.

² AMD's numbering is not a measurement of clock speed.

³ Quad-Core and Dual Core are designed to improve performance of multithreaded software products and hardware-aware multitasking operating systems and may require appropriate operating system software for full benefits; check with software provider to determine suitability. Not all customers or software applications will necessarily benefit from use of these technologies.

⁴ Intel's numbering is not a measurement of higher performance.

⁵ 64-bit computing on Intel architecture requires a computer system with a processor, chipset, BIOS, operating system, device drivers and applications enabled for Intel 64 architecture. Processors will not operate (including 32-bit operation) without an Intel 64 architecture-enabled BIOS. Performance will vary depending on your hardware and software.

⁶ This workstation does not support the Intel Core 2 Extreme processor over-clocking feature.

⁷ This system requires a separately purchased 64-bit operating system and 64-bit software products to take advantage of the 64-bit processing capabilities of the AMD Opteron processor. Given the wide range of software applications available, performance of a system including a 64-bit operating system will vary.

⁸ I/O card must also be Gen2 in order to realize PCI Express® Base 2.0 Specification (also known as PCIe Gen2) graphics performance.

⁹ Hardware RAID is not supported on Linux systems. The Linux kernel, with built-in software RAID, provides excellent functionality and performance. It is a good alternative to hardware-based RAID. Please visit <http://h20000.www2.hp.com/bc/docs/support/SupportManual/c00060684/c00060684.pdf> for RAID capabilities with Linux.

¹⁰ 1 GB=1 billion bytes. Actual formatted capacity is less. Up to 8 GB of hard drive (or system disk) is reserved for the system recovery software (XP and XP Pro). Up to 12 GB of system disk is reserved for system recovery software. (Vista).

¹¹ Actual speeds may vary. Does not permit copying of commercially available DVD movies or other copy-right protected materials. Intended for creation and storage of your original material and other lawful uses.

¹² Double Layer discs can store more data than single layer discs. However, double-layer discs burned with this drive may not be compatible with many existing single-layer DVD drives and players. Note that DVD-RAM cannot read or write to 2.6GB Single Sided/5.2 GB Double Sided – Version 1.0 media.

¹³ LightScribe creates a monochrome image. LightScribe media required and sold separately.

¹⁴ As HD DVD and Blu-ray are new formats containing a new technologies, certain disc, digital connection, compatibility and/or performance issues may arise, and do not constitute defects in the product. Flawless playback on all systems is not guaranteed. Blu-ray Disc movies cannot be played on this Notebook PC.

¹⁵ The term "10/100/1000" or "Gigabit" Ethernet indicates compliance with IEEE standard 802.3ab for Gigabit Ethernet, and does not connote actual operating speed of 1 Gb/sec. For high speed transmission, connection to a Gigabit Ethernet server and network infrastructure is required.

Configure and buy HP personal workstations online <http://www.hp.com/workstations>

© Copyright 2009 Hewlett-Packard Development Company, L.P. The information contained herein is subject to change without notice and is provided "as is" without warranty of any kind. The warranties for HP products and services are set forth in the express warranty statements accompanying such products and services. Nothing herein should be construed as constituting an additional warranty. HP shall not be liable for technical or editorial errors or omissions contained herein. Intel, Pentium, Core, and Xeon are registered trademarks of Intel Corporation or its subsidiaries in the United States and other countries. Microsoft and Windows are U.S. registered trademarks of Microsoft Corporation. Windows Vista is either a registered trademark or trademark of Microsoft Corporation in the United States and/or other countries. AMD and Opteron are trademarks of Advanced Micro Devices, Inc. HyperTransport is a licensed trademark of the HyperTransport Technology Consortium. ENERGY STAR® is a US registered mark of the United States Environmental Protection Agency. Bluetooth is a registered trademark of Bluetooth SIG, Inc., in the U.S. and other countries.



Free Manuals Download Website

<http://myh66.com>

<http://usermanuals.us>

<http://www.somanuals.com>

<http://www.4manuals.cc>

<http://www.manual-lib.com>

<http://www.404manual.com>

<http://www.luxmanual.com>

<http://aubethermostatmanual.com>

Golf course search by state

<http://golfingnear.com>

Email search by domain

<http://emailbydomain.com>

Auto manuals search

<http://auto.somanuals.com>

TV manuals search

<http://tv.somanuals.com>