



HP Photosmart Pro B8850 Photo Printer



Outstanding photo and fine-art printing for the serious photographer.

Professional photo quality

Now you can easily produce archival, professional photos at home or in-studio. Eight individual pigment-based HP Vivera inks give you precise, wide-ranging colors for lifelike portraits and brilliant landscapes. True neutral grays and deep blacks ensure stunning black-and-white photos.

Count on exceptional fade-resistance—archival-quality prints resist fading under glass for 200-plus years, using HP Advanced Photo Paper.¹ Plus, photos are ready to handle immediately and resist water, smudges, and humidity.

HP color management tools fully support Adobe RGB, sRGB, and ICC profiles for greater color control. Basic color calibration automatically adjusts the print settings to maintain accuracy and ensures consistent color reproduction print after print.

You'll find this printer to be a quick and efficient solution for creating eye-catching marketing materials and presentations in-house.

Reliable

HP's inks, media, and printing technology are all designed and tested to work together for precise color, image uniformity, and detail. High-capacity, individual ink cartridges enable more affordable printing with fewer interruptions. Minimize waste with Electrostatic Drop Detection, an efficient, self-monitoring system that keeps the printer in top condition by cleaning only the individual print nozzles that require it.

Easy to use

An HP DreamColor product, the HP Photosmart Pro B8850 helps you effortlessly achieve prints that match your creative vision. See 4 by 6 inch photos in as fast as 10 seconds (13 by 19 inch photos in as fast as 90 seconds).

The printer is compatible with Adobe Photoshop® CS3 for easy management and streamlined printing. The HP Photosmart ProPrint plug-in for Adobe Photoshop CS2 automatically synchronizes CS2 and the printer driver for a single user interface.

An interactive, animated setup wizard ensures easy installation. The HP Solution Center provides one-button access to tools such as ICC profiles or the ability to add contrasts, textures and effects.

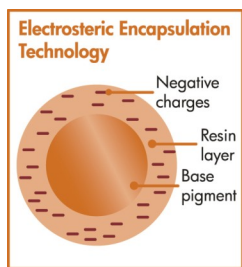
¹ Display permanence rating by Wilhelm Imaging Research, Inc. or HP Image Permanence Lab using select HP Vivera pigment inks. For details, visit www.hp.com/go/printpermanence.

HP Photosmart Pro B8850 Photo Printer

- 1 Three control panel buttons
- 2 Attention light and eight ink level indicators
- 3 Power button
- 4 Top door for access to printheads
- 5 Single-sheet specialty media tray (closed)
- 6 Ink cartridge door
- 7 50-sheet output tray
- 8 200-sheet input tray
- 9 Rear paper slot
- 10 USB port
- 11 Rear access door
- 12 Rear door releases
- 13 Power cord connection

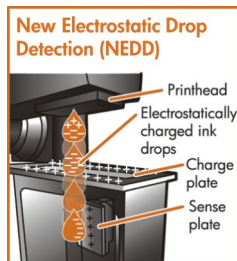


Key technologies

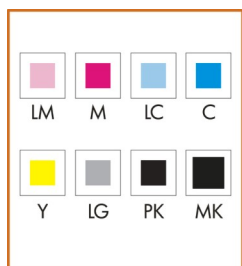


vivera
HP INKS

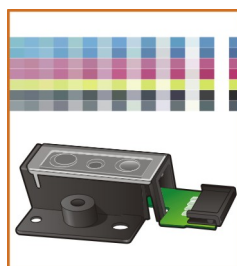
HP Vivera pigment inks offer outstanding image quality and fade resistance on a wide variety of photo and fine art media, along with water resistance on a range of HP creative and specialty media. HP's proprietary Electrosteric Encapsulation Technology optimizes the pigment chemistry and ink properties for stability and performance to ensure brilliant colors, outstanding print permanence, and excellent gloss uniformity, for reliable, accurate, and consistent printing.



HP's New Electrostatic Drop Detection (NEDD) printhead management system closely monitors all 8,448 print nozzles to minimize cleaning cycles and keep your printer in top working condition. When necessary, these cycles clean only the individual nozzles that require it, in order to minimize ink waste. The result is consistently beautiful and economical professional-quality pigment prints.



HP's 8-ink printing system includes four HP 70 Printheads, each printing two colors of ink with 1,056 nozzles per color. The system features HP Vivera pigment inks in five colors and three blacks. (No black ink swapping or feed line flushing which results in wasted ink.) These inks deliver an exceptionally broad color gamut for photographic and graphics art applications, superb neutral tones, and deep blacks on matte, glossy, semi-gloss, and fine art papers.



The product's built-in densitometer automatically calibrates printer color with a factory calibrated sensor. The 4-color LED sensor measures color density and automatically adjusts the printer. You can easily calibrate the printer using the print driver software. This feature allows you to confidently create prints that accurately reflect your monitor and your vision.

Create professional-looking marketing documents, proofs, and other materials in-house.

Supports a variety of media

The HP Photosmart Pro B8850 Printer offers you the flexibility to print on a range of media sizes and types. Enjoy support for paper from 3.5 by 5 inches to 13 by 19 inches, with or without borders. Print on a variety of plain paper, photo media, and digital fine art media up to 0.7 mm—for photos with a look and feel that matches your unique vision, including matte and glossy finishes. The single-sheet specialty media tray with straight-through paper path delivers great results when using thick media.

Not just for photos

Use this printer for applications beyond photo printing, including marketing materials such as brochures, newsletters, and presentations. Get crisp, clear laser-quality text and brilliant color for professional-looking output.



Get the most out of your printer with HP accessories, supplies, and services.

Your work will shine with HP papers. HP Advanced Photo Glossy and HP Advanced Photo Satin exhibit extreme waterfastness and rapid drying times.



Our digital fine art papers are among the best offered by the Hahnemühle and Aquarella paper mills. All have been tested with HP Vivera pigment inks to deliver consistent, gallery-quality prints that withstand the demands of handling, display, and storage expected of professional prints.

If you have Adobe Photoshop CS2 or earlier on your computer, you have the option of installing the HP Pro Print Plug-in for Adobe Photoshop during product installation. With this free plug-in, HP has made all of Photoshop's "print with preview" functions available from a single screen. In addition, changes you make in print selections immediately show up on the image preview.

When you buy any HP product, you can depend on award-winning service, advice, learning, and support—including e-mail responses in as fast as one hour—with HP Total Care.

Ink cartridges²

HP 38 Matte Black Pigment Ink Cartridge (~3,000 4 by 6 in photos)	C9412A
HP 38 Photo Black Pigment Ink Cartridge (~1,400 4 by 6 in photos)	C9413A
HP 38 Light Gray Pigment Ink Cartridge (~320 4 by 6 in photos)	C9414A
HP 38 Cyan Pigment Ink Cartridge (~4,500 4 by 6 in photos)	C9415A
HP 38 Magenta Pigment Ink Cartridge (~4,400 4 by 6 in photos)	C9416A
HP 38 Yellow Pigment Ink Cartridge (~840 4 by 6 in photos)	C9417A
HP 38 Light Cyan Pigment Ink Cartridge (~1,200 4 by 6 in photos)	C9418A
HP 38 Light Magenta Pigment Ink Cartridge (~550 4 by 6 in photos)	C9419A

Printheads

HP 70 Photo Black/Light gray	C9407A
HP 70 Matte Black/Cyan	C9404A
HP 70 Magenta/Yellow	C9406A
HP 70 Light Cyan/Light Magenta	C9405A

Accessories

HP USB cable	Q6264A
--------------	--------

HP photo papers

HP Advanced Photo Paper, glossy, 25-sheet/13 by 19 in	Q5461A
HP Advanced Photo Paper, satin matte, 25-sheet/13 by 19 in	Q5462A
HP Professional Satin Photo Paper, 25-sheet/13 by 19 in	Q8839A

HP digital fine art papers

HP Hahnemühle Smooth Fine Art Paper, 25-sheet/13 by 19 in	Q8728A
HP Hahnemühle Watercolor Paper, 25-sheet/13 by 19 in	Q8729A
HP Aquarella Art Paper, 25-sheet/13 by 19 in	Q8730A
HP Artist Matte Canvas, 25-sheet/13 by 19 in	Q8731A

Service and support

HP 2-year Next Business Day Exchange H Service	UG606E
HP 3-year Next Business Day Exchange H Service	UG609E
HP 4-year Next Business Day Exchange H Service	UH610E

² Yield varies considerably based on content of printed pages and other factors. Please visit www.hp.com/go/learnaboutsupplies.

HP Photosmart Pro B8850 Photo Printer

Technical specifications

Part number	Q7161A
Print technology	HP thermal inkjet
Print resolution (best)	Up to 4800 optimized dpi color (up to 4800 by 1200 dpi color when printing from a computer and 1200 input dpi)
Print speed³	Black (draft, letter/A4): up to 28 ppm; Color (draft, letter/A4): up to 26 ppm; 4 by 6 color photo (draft): as fast as 10 sec; 13 by 19 in color photo (draft): as fast as 90 seconds
Borderless printing	Supported (up to 13 by 19 in)
Duty cycle	Up to 1,000 pages ⁴
Paper	
Input	200-sheet input tray (holds up to 60 sheets of photo paper), single-sheet specialty media tray
Output	Up to 50 sheets (holds up to 20 sheets of photo paper)
Types	Paper (photo, digital fine art media, coated, inkjet, plain), labels, cards (index, greeting)
Sizes (standard)	Letter, legal, tabloid, executive, 3.5 by 5 in, 4 by 6 in (with or without tabs), 5 by 7 in, 8 by 10 in, 11 by 14 in, 11 by 17 in, Super B (13 by 19 in), envelopes; 10 by 15 cm (with or without tabs), 10 by 30 cm, 13 by 18 cm, A3, A3 Plus, A4 (including panorama), A5, A6, Super B (33 by 48 cm), B4, B5, E, L, 2L, Hagaki, Ofuku Hagaki, A2 envelope, C6 envelope, DL envelope
Sizes (custom)	Main tray: 3.5 by 5 in (89 by 127 mm) to 13 by 19 in (330 by 482 mm) Specialty tray: 3.5 by 5 in (89 by 127 mm) to 13 by 19 in (330 by 482 mm) (single sheet only)
Weights	Main tray: 80 to 250 g/m ² (up to 15 mil) Specialty media tray: 80 to 380 g/m ² (0.7 mm thick)
Memory	64 MB
Control panel	4 buttons (power, cancel, paper feed, toolbox), 8 low ink indicator LEDs, 1 printhead servicing LED
Vertical alignment accuracy	+/- 0.002 in (+/- 0.05 mm)
Skew	+/- 0.006 in
Connectivity	One Hi-Speed USB 2.0 port
Language	HP PCL 3 GUI
Operating systems	Microsoft® Windows XP® Home; Windows XP Professional; Windows XP Media Center; Certified for Windows Vista®
Minimum system requirements	PC (minimum): CD-ROM or DVD-ROM drive; available USB port and USB cable; SVGA 800 by 600 monitor with 16 bit color; Microsoft® Internet Explorer 5.01 SP2 or higher; 400 MB available hard disk space; Windows XP Home, Windows XP Professional, Windows XP Media Center Edition: 512 MB RAM, 1 Ghz or higher; Windows XP Professional x64 Edition: 1 GB RAM, 1 Ghz or higher; Vista Home: 512 MB RAM, 1 Ghz or higher; Vista (all others): 1 GB RAM, 1 Ghz or higher PC (recommended): CD-ROM or DVD-ROM drive; available USB port and USB cable; SVGA 1024 by 768 monitor with 32 bit color; Adobe Acrobat Reader 5 or higher; Internet access; Microsoft Internet Explorer 5.01 SP2 or higher; 400 MB available hard disk space; Windows XP Home, Windows XP Professional, Windows XP Media Center Edition: 1 GB RAM, 2 Ghz or higher; Windows XP Professional x64 Edition: 2 GB RAM, 2 Ghz or higher; Vista Home: 1 GB RAM, 2 Ghz or higher; Vista (all others): 2 GB RAM, 2 Ghz or higher Macintosh: Mac OS 10.3.9 or higher; G4, G5, or Intel Core; 512 MB RAM; 150 MB available hard disk space; USB port
Dimensions (w by d by h)	26.5 by 16.9 by 9.5 in (673.1 by 429 by 241.3 mm)
Weight	37.7 lb (17.1 kg)
What's in the box	HP Photosmart Pro B8850 Photo Printer, HP 38 Ink Cartridges (1 each photo black, matte black, gray, cyan, magenta, yellow, light cyan, light magenta), HP 70 printheads (1 each magenta/yellow, light magenta/light cyan, matte black/cyan, photo black/light gray), HP Photosmart software on CD, quick start poster, user's guide, power cord
Warranty	One-year limited hardware warranty backed by HP Customer Care service and support; includes technical phone support, plus a toll-free number

Environmental ranges

Maximum temperature	41 to 104° F (5 to 40° C)
Recommended temperature	59 to 90° F (15 to 32° C)
Storage temperature	-40 to 149° F (-40 to 65° C)
Recommended relative humidity	20 to 80 percent
Storage relative humidity	5 to 90 percent

Acoustics

Sound power	Active, printing at 2.2 ppm: 5.7 B(A)
Bystander sound pressure	Active, printing at 2.2 ppm: 43 dB(A)

Power specifications

Required input voltage	100 to 240 VAC (±10 percent), 50/60 Hz (±5 Hz), 1 amp
Power consumption ⁵	Active: 35 watts; Ready: 7.8 watts; Off: 0.42 watts
ENERGY STAR® qualified models, see www.hp.com/go/energystar	

Certifications

Safety	IEC 60950-1:2001 compliant, EU LVD 2006/95/EC and EN 60950-1:2001 compliant, CSA(us) 60950-1:2003 listed, CSA 60950-1-03
EMC	USA (FCC Part 15 Class B Rules)
HP SureSupply enabled. To learn more, visit www.hp.com/suresupply	

³ Print speed is dependent upon type, print mode, and approximate figures. Exact speed will vary depending on the system configuration, software program, and document complexity.

⁴ Duty cycle is defined as the maximum number of pages per month of imaged output. This value provides a comparison of product robustness in relation to other HP LaserJet or HP Color LaserJet devices, and enables appropriate deployment of printers and MFPS.

⁵ Power requirements are based on the country/region where the product is sold. Do not convert operating voltages or use with other voltages. Doing so might cause damage that would not be covered under HP's product warranty.



ENERGY STAR and the ENERGY STAR logo are registered U.S. marks. Microsoft, Windows, and Windows XP are registered trademarks of Microsoft Corporation. Windows Vista is either a registered trademark or trademark of Microsoft Corporation in the United States and/or other countries. Adobe Photoshop is a trademark of Adobe Systems Incorporated.

© Copyright 2008 Hewlett-Packard Development Company, L.P.

The information contained herein is subject to change without notice. The only warranties for HP products and services are set forth in the express warranty statements accompanying such products and services. Nothing herein should be construed as constituting an additional warranty. HP shall not be liable for technical or editorial errors or omissions contained herein.



To learn more, visit www.hp.com

4AA1-7433ENUC, January 2008

Free Manuals Download Website

<http://myh66.com>

<http://usermanuals.us>

<http://www.somanuals.com>

<http://www.4manuals.cc>

<http://www.manual-lib.com>

<http://www.404manual.com>

<http://www.luxmanual.com>

<http://aubethermostatmanual.com>

Golf course search by state

<http://golfingnear.com>

Email search by domain

<http://emailbydomain.com>

Auto manuals search

<http://auto.somanuals.com>

TV manuals search

<http://tv.somanuals.com>