

# LP40-TDR1

HD Ready 40" DTR Freeview LCD TV

Don't miss your favourite programmes again!





# LP40-TDR1

## HD Ready 40" DTR Freeview LCD TV

### Don't miss your favourite programmes again!

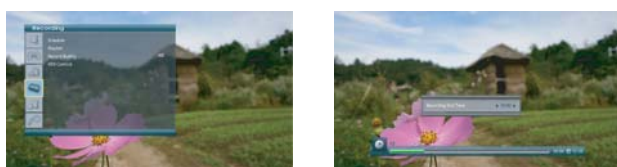
LP40-TDR1 gives you the highest quality digital audio output and advanced video clarity. You can enjoy analogue and digital TV broadcasts with convenience. Now there's no need for video tapes. You can simply record your favourite programmes on the built-in hard disk drive. In fact, you can watch one programme while recording another.



#### Features & Functions

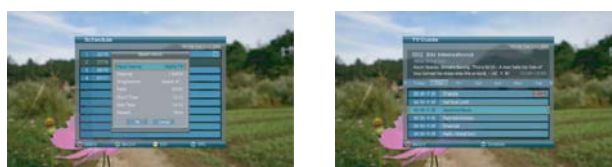
- Analogue and Digital Terrestrial Television (DTT) receptions
- 2 Digital Terrestrial Tuners
- Up to 100 hours of recording on an integrated 160GB HDD
- HD Ready TV
- HDMI Port (Supports 480i, 480p, 576i, 576p, 720p and 1080i)
- MPEG-2 Digital & Fully DVB-T Compliant
- Variable Input/Output (Component, SCART, CVBS, S-Video)
- Simultaneous viewing of one channel and recording another channel
- Time Shift Recording
- Interactive communication via MHEG middleware
- Picture in Picture (PIP) / Dual Screen (DS) functions
- Virtual surround audio: multi-functional SRS TruSurround XT
- Common Interface slot
- PC Input (WXGA video resolution support)
- Advanced Color Enhancement (Flesh-tone Compensation & Color Enhancement)
- Digital Audio Output
- Digital Teletext and Subtitle / Analogue Teletext
- Auto Tuning System
- 1366 x 768 Panel resolution support

#### Recording another channel whilst watching a live TV or play-back



- Built-in Hard Disk Drive (Digital Channels storage)
- Instant Replay and Skip during AV watching

#### EPG(Electronic Programme Guide) Look at the next 7days TV guide and easily record your favourite programmes.



- One touch record scheduling in EPG information



## Picture In Picture

You can enjoy watching 2 of your favorite shows at the same time.



## Time shift Recording

This function allows the user to rewind live TV to the point they started watching the channel. You can play from this point or record to the HDD. (\*When the channel is changed, the temporary recording will be lost.)

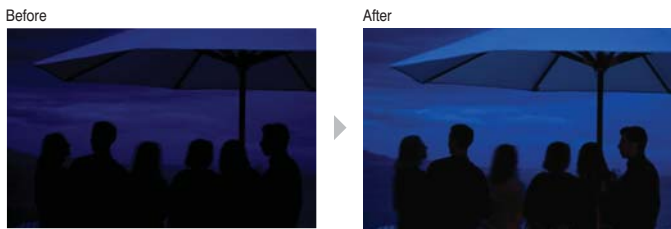


- Momentous pause and play live TV
- Fast Forward/Rewind in various speeds and Slow Motion
- TSR buffering for 2 hours

### 1. Authentic Colour(Contrast & Colour)



Daytime scenes needing boost of darker colours

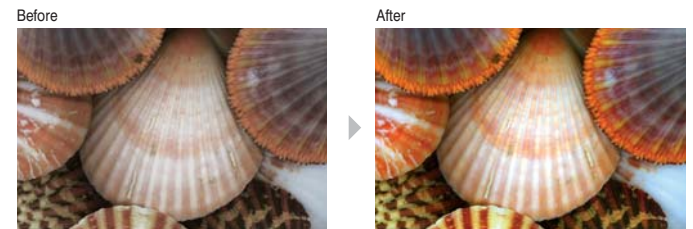


Nighttime scenes needing boost of brighter colours

### 2. Advanced Colour Enhancement (Flesh-tone Compensation & Colour Enhancement)

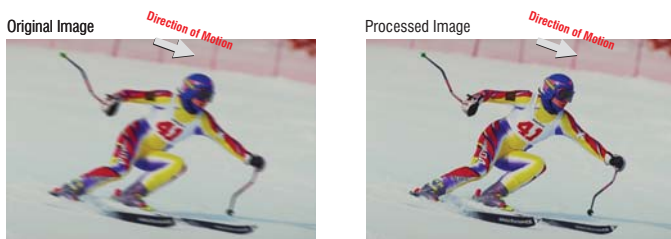


Flesh-tone Compensation



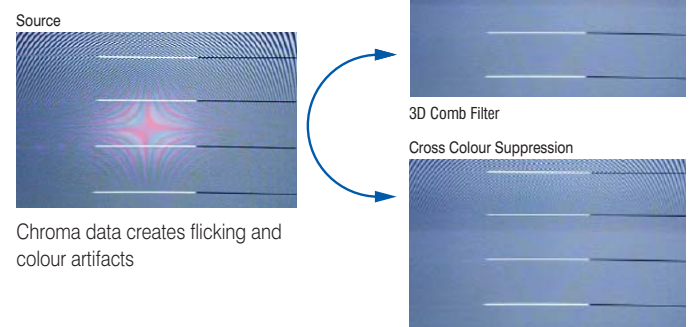
Colour Enhancement

### 3. High-speed Motion Adaptive Function



(Slow panning as viewed on screen)  
High-speed Motion Adaptive Function Removes Motions Blur

### 4. Cross Color Suppression : (Compared with 3D Comb Filter)

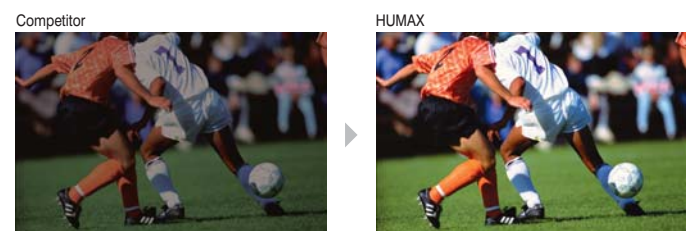


### 5. Noise Reduction

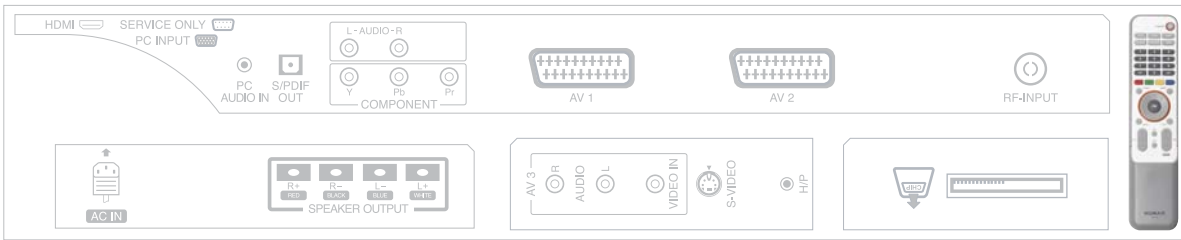


With True 3-D Noise Filtering, Noise Meter and Flesh-tone Sensitive Filtering, 6-10dB noise reduction can be achieved without loss of sharpness

### 6. ChromaBug Removal :



With independent colour controls and colour space conversion, HUMAX ChromaBug Removal is better at correcting errors in Saturated Colours from MPEG sources.



## Specification

Model 40" 2 Tuner DTR LCD TV

### Main Features

DTR	Yes
Live/Phase	Yes
Digital Tuner	2 DVB-T(Analog Multi)
MHEG	Yes

### Inputs / Outputs

CI	1CI
Smart Card(HW Ready)	Yes
SCART	2
RGB SCART(among SCARTs)	2
Composite In(V/L/R)	1
S-Video	1(Share w/ CVBS)
Component(Y/Pb/Pr)	1
HDMI	1
S/PDIF	1
PC Input	1
PC Audio Input	1
RS-232C	1
Headphone Output	1

### Digital Tuner

Input Connector	IEC-Type, IEC 169-2, Female
Frequency Range	48.5MHz to 219.5 Hz (VHF), 529.5MHz to 816.5 MHz (UHF)
Signal Level	-10 to -70 dbm
Modulation	OFDM

### Demodulator

Waveform	OFDM
Input Rate	Max. 15Mbps/s
Codes Rate	1/2, 2/3, 3/4, 5/6 & 7/8
Guard Interval	1/4, 1/8, 1/16 & 1/32
Video Decoding System	MPEG-2 Main Profile @ Main Level
Audio Decoding System	MPEG/MusiCam Layer I & II

### Analog Tuner

Receiving System	PAL B/G, D/K, I SECAM B/G, D/K, L
RF Signal	VHF / UHF / Cable TV
Sound Modulation	AM / FM / Nicam
Automatic Tuning System	Yes

### PC Mode

Horizontal Frequency	30-70kHz
Vertical Frequency	50-75Hz
Video Bandwidth	1024 x 768 @75Hz, 1280 x 1024 @60Hz
Video Modes in PC	480p, 576p, 720p, 1080i

### Audio

Amplifier	15W x 15W
Surround mode(SRS)	Yes
Speaker Location(Built-In)	Bottom

### Others

HDD	160GB
Input Voltage	100-240V, 50/60Hz
MTBF	50,000 Hours
Operating Condition	Temp. : 5°C ~ 35°C Humidity : 10% ~ 90%

### Video

Video System	PAL/SECAM
2 Tuner PIP	Yes
Aspect	4:3, 16:9, Zoom1, Zoom2
Color Temperature	Cool, Normal, Warm
De-interlacing	3-D Motion Adaptive
3-D Comb Filter	Yes
Noise Reduction	Yes
Sharpness	LTI/CTI
Color Enhancement	Flesh Tone Enhancement
Teletext	1,000 Pages

### Software for Digital

Middleware	HUMAX Own M/W
Base UI	NEO Modify, Unified Design (1366x768)
EPG	HUMAX Own : 7 days EPG
Digital CH No.	200
Channel Search	Auto/Manual
Fav CH No.	200 CH/group (1group)
OSD Languages	English/German/French/Italian/Spanish/Danish/ Portuguese/Swedish/Norwegian/Finnish/Greek

### Software for Analogue

Automatic Tuning System	Yes
Channel Search	Auto/Manual
Teletext Decoding	Yes
Picture Mode	Standard, Dynamic, Movie, Mild, Game, User
Sound Effect	Flat, Speech, Movie, Music, User

### PVR Software

2 A/V Input Recording	1 Recording + 1 Playback/View
External A/V Input Recording	Yes(SCART 1, SCART 2, CVBS, S-Video) SCART (RGB input) to CVBS recording
Time Shift Recording	Yes
Reservation	Recording Reservation by EPG or Manual
Various Speed Playback	FF/RW/Slow Motion
Bookmark	Yes
Instant Replay	Yes

### Accessory

RCU	1
Power Adaptor/Power Cable	1
Manual	English(1) + Foreign (1)
Battery	AAA x 2

### Dimensions

Width x Height x Depth	104.9 x 78.8 x 25.3 cm(with stand)
Weight	40kg

## Free Manuals Download Website

<http://myh66.com>

<http://usermanuals.us>

<http://www.somanuals.com>

<http://www.4manuals.cc>

<http://www.manual-lib.com>

<http://www.404manual.com>

<http://www.luxmanual.com>

<http://aubethermostatmanual.com>

Golf course search by state

<http://golfingnear.com>

Email search by domain

<http://emailbydomain.com>

Auto manuals search

<http://auto.somanuals.com>

TV manuals search

<http://tv.somanuals.com>