

Transducer Switch

531870-1_A

Thank You

Thank you for choosing Humminbird®, America's #1 name in fishfinders. Humminbird® has built its reputation by designing and manufacturing top-quality, thoroughly reliable marine equipment. Genuine Humminbird® accessories offer the opportunity to upgrade and expand the capabilities of your Humminbird® product.

Your Humminbird® accessory is designed for trouble-free use in even the harshest marine environment. In the unlikely event that your Humminbird® accessory does require repairs, we offer an exclusive Service Policy - free of charge during the first year after purchase, and available at a reasonable rate after the one-year period. For complete details, see the Warranty section included in this manual.

Contact our Customer Resource Center at **1-800-633-1468** or visit our Web site at humminbird.com.

Installation Overview

Following are instructions for the installation of this accessory. Before you start installation, we encourage you to read these instructions carefully in order to get the full benefit from your Humminbird® accessory. If you find that any items are missing from your installation kit, call our Customer Resource Center at **1-800-633-1468** or visit our Web site at humminbird.com.

The Transducer Switch comes with all the necessary hardware to allow you to connect your control head to two transducers. The transducers may be the same type of transducer with different mounting locations, or you can maximize your unit's performance by using two different transducers. The switch is intended for installation on the console, and will work well on almost any boat.

Supplies: In addition to the hardware supplied with your Transducer Switch, you will need a hand drill with various size bits, a Phillips screwdriver, an adjustable wrench, and a 3 amp fuse.

Installation

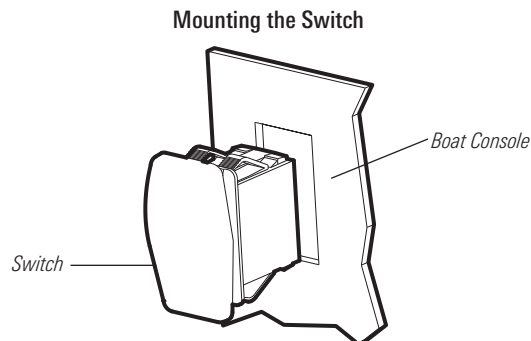
Perform the procedures in the following sections to install the Transducer Switch on your boat. Before installing the Transducer Switch, gather all the parts you will need, and make sure that the planned location of the Transducer Switch will allow you to connect the two transducers to your control head.

1. Locating the Transducer Switch Mounting Position

There are two ways to find the mounting location, as follows:

Switch Panel: If your console already contains a switch panel with an available slot, slide the Transducer Switch into the designated slot until it snaps into place. Then skip ahead to procedure two.

In-Dash: If your console does not have a switch panel or a pre-made mounting location, you will need to create one yourself.



Transducer Switch



Transducer Switch

531870-1_A

To manually create a mounting location:

1. Locate a suitable, flat area of the dash to mount the Transducer Switch. The switch requires a depth of at least 1.5 inches (38.1 millimeters). Make sure that it will be positioned near your control head on the console of the boat, within reach of the cables for both transducers. Also, make sure you have access behind the panel in order to attach the cables.
2. Tape the template (included) over the desired in-dash mounting location.
3. At a location inside the dotted line on the template, drill a hole large enough to insert the blade of the reciprocating saw. Carefully begin cutting toward the dotted line, then follow the dotted line around the template. Remove the template when finished.
4. Insert the end of the switch through the hole until it snaps securely in place.

2. Connecting the Transducers and the Control Head to the Switch

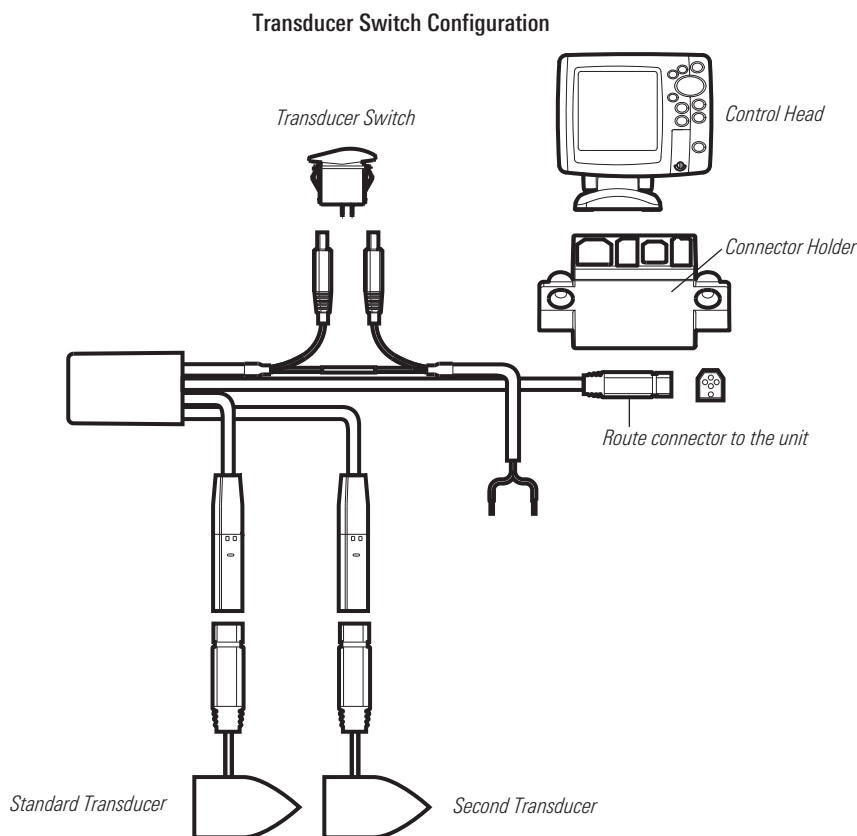
To connect your Transducer Switch to your control head, you may have to remove the control head from the Quick Disconnect Mounting Bracket and temporarily disassemble the connector holder.

NOTE: Your connector holder hardware may be different than the illustration, depending on your Humminbird® model. See your control head installation guide for details.

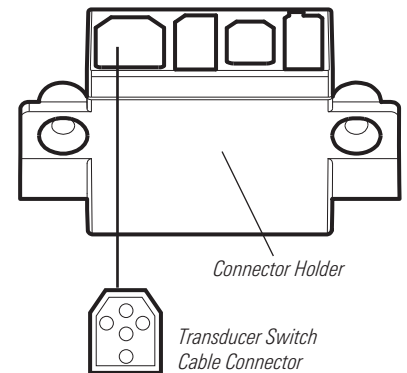
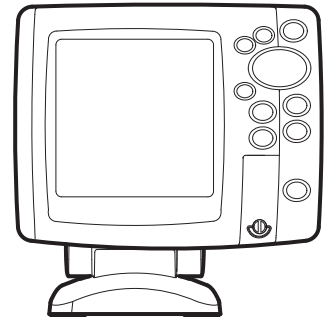
CAUTION! Do not cut or shorten the transducer cables, and try not to damage the cable insulation. Route the cable as far as possible from any VHF radio antenna cables or tachometer cables to reduce the possibility of interference. If the cable is too short, extension cables are available to extend the transducer cable up to a total of 50 feet. For assistance, contact the Customer Resource Center at humminbird.com or call 1-800-633-1468 for more information.

To connect the transducers to the Transducer Switch:

1. Access your transducer cables and insert each transducer cable connector into a Transducer Switch connector until you hear it click into place. Refer to the illustration for guidance.



Inserting the Cable Connector



Transducer Switch

NOTE: Use caution while sliding the transducer connectors into the Transducer Switch connectors. The slots for the connectors are keyed to prevent reversed installation, so do not force the connectors together. See your control head installation guide for additional information.

To connect the connector clips to the Transducer Switch:

1. From the back side of the panel, plug the two connector clips from the switch assembly into the two outlets of the Transducer Switch.

NOTE: Connecting the connector clips to the Transducer Switch does not require a specific order; either connector will work with either outlet.

To connect the control head to the Transducer Switch:

1. Remove the connector holder from your control head.
2. Insert the Transducer Switch cable connector into the T2 slot (transducer slot) of the connector holder.

NOTE: The slots are keyed to prevent reversed installation, so be careful not to force the connector into the holder. See your control head installation guide for additional information.

700 SERIES™ NOTE: If you are installing the Speed Sensor accessory (optional), insert the Sonar/Speed Y-Cable connector into the T2 slot on the connector holder. Then, connect the transducer connector and speed sensor connector to the corresponding connectors on the Y-Cable. The Y-Cable requires a separate purchase. Contact our Customer Resource Center for details at **1-800-633-1468** or visit our Web site at humminbird.com.

3. Connecting the Power Cable

Connect the Transducer Switch power cable to the boat's fuse panel (usually located near the console). If you must connect to a battery, connect to a battery switch (not included).

- 1a. If a fuse terminal is available, use crimp-on type electrical connectors (not included) that match the terminal on the fuse panel. Attach the black wire to ground (-), and the red wire to positive (+) 12 VDC power. Install a 3 amp fuse (not included) for protection of the unit. Humminbird® is not responsible for over-voltage or over-current failures.

or...

- 1b. If you need to wire the control head to a battery, obtain and install an inline fuse holder, a 3 amp fuse (not included) for the protection of the unit, and a battery switch (not included). Install the battery switch using the instructions provided with it.

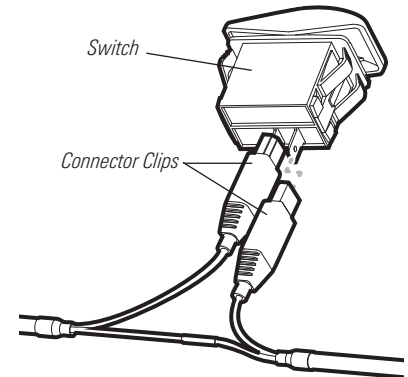
NOTE: If you are unable to obtain a battery switch and are forced to connect the power cable directly to the battery, be aware that this may cause a slow loss of power over time. See procedure five, **Powering Off**.

NOTE: Humminbird® is not responsible for over-voltage or over-current failures. The control head must have adequate protection through the proper selection and installation of a 3 amp fuse.

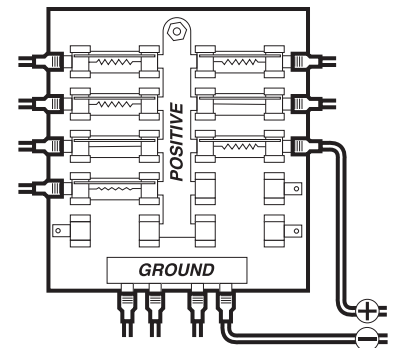
2. Secure the installation with cable ties (optional).

Your Transducer Switch is now ready for operation.

Connecting the Connector Clips to the Transducer Switch



Connecting to a Fuse Panel



Transducer Switch

531870-1_A

4. Switching Transducers

Perform the following procedures to alternate between the transducers connected to your Transducer Switch.

To activate a transducer:

1. Press the Transducer Switch to select the desired transducer.
2. Turn on your control head.
3. In any view, press the MENU key twice to open the Main Menu.
4. Press the RIGHT or LEFT Cursor keys to highlight the **Sonar** menu tab.
5. Press the DOWN Cursor key to select **Transducer Select**.
6. Press the RIGHT or LEFT Cursor keys again to select a transducer.

5. Powering Off

It is important to make sure all accessories (switches, control heads, etc.) are powered off in order to avoid possibly draining the battery. To make sure your Transducer Switch is disengaged, follow the steps below.

If your Transducer Switch is connected to the fuse panel,

1. Power off your boat to disengage the switch.

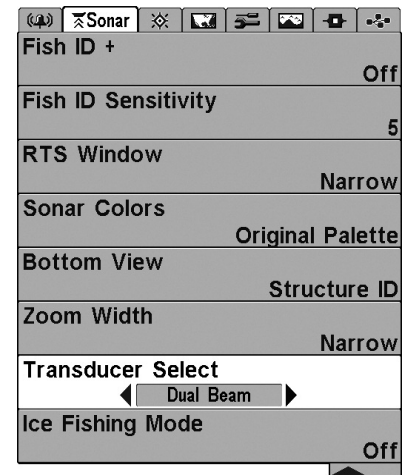
If your Transducer Switch is connected to a battery switch,

1. Turn the dial of the battery switch to the OFF position.

If your Transducer Switch is connected directly to a battery,

1. Power off your boat.
2. Remove the Transducer Switch wires from the battery.

Changing Transducers in the Menu System



Sonar Menu

Free Manuals Download Website

<http://myh66.com>

<http://usermanuals.us>

<http://www.somanuals.com>

<http://www.4manuals.cc>

<http://www.manual-lib.com>

<http://www.404manual.com>

<http://www.luxmanual.com>

<http://aubethermostatmanual.com>

Golf course search by state

<http://golfingnear.com>

Email search by domain

<http://emailbydomain.com>

Auto manuals search

<http://auto.somanuals.com>

TV manuals search

<http://tv.somanuals.com>