

Set & Save

Programmable Thermostat

Installation and Operation Manual

English

Model

44360



Form# 42710-01

20091204

©2009 Hunter Fan Co.

Hunter[®]
SINCE 1886



Table of Contents

Important Information	5
Tools	6
Uninstalling the Existing Unit.....	7
Installing the Thermostat	12
Installing the Wall Plate	12
Connecting the Wires	16
Attaching the Thermostat	18
Settings.....	22
Methods of Operation	26
Manual Operation / Override	28
Default Programs	32
Creating Custom Programs	34
Icons and Features.....	38
Important Features	52
Troubleshooting.....	53

Set & Save

Programmable Thermostat

Model 44360

Congratulations!

Thank you for choosing a Hunter programmable thermostat. Your new Hunter thermostat will provide years of reliable service and year-round energy savings.

Please read this manual before beginning installation and save this booklet for complete operation instructions.

The Hunter Technical Support Group is available from 7 am to 7 pm Monday - Friday and 8:00 to 5:00 Saturdays CST. They may be reached toll-free at 1-888-830-1326.

IMPORTANT INFORMATION

This thermostat is designed to work on the following heating and cooling systems:

- Gas – Standing Pilot
- Gas – Electronic Ignition
- Gas – Fired Boilers
- Gas – Millivolt Systems
- Oil – Fired Boilers
- Oil – Fired Furnace
- Electric Furnace
- Electric Air Conditioning
- Single-Stage Heat Pumps

This thermostat is not designed for multi-stage heat pump systems or 110/220 V baseboard heating systems.

If you are unsure what kind of heating and cooling system you have, please contact a qualified HVAC Technician for assistance.

TOOLS

This thermostat includes two #8 slotted screws and two wall anchors for mounting.

To install your new thermostat, you will need the following supplies:

Flat-head screwdriver

.....

Small Phillips-head screwdriver

.....

Hammer

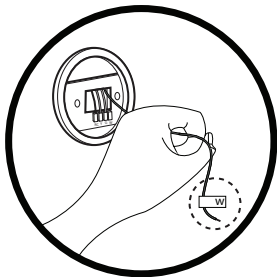
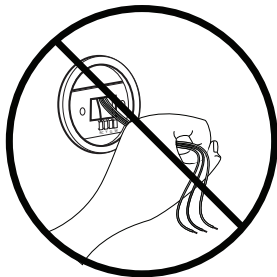
.....

Electric drill and 3/16" bit

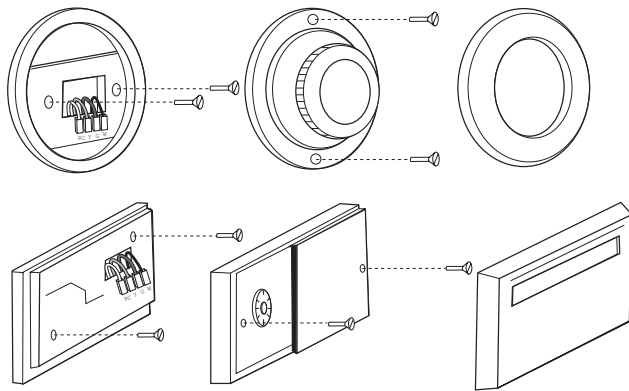
.....

Two 1.5 Volt (AA) size alkaline batteries

.....



NOTICE! Do not disconnect the wires from the existing thermostat before reading these instructions. The wires must be labeled prior to removal to ensure proper reconnection.



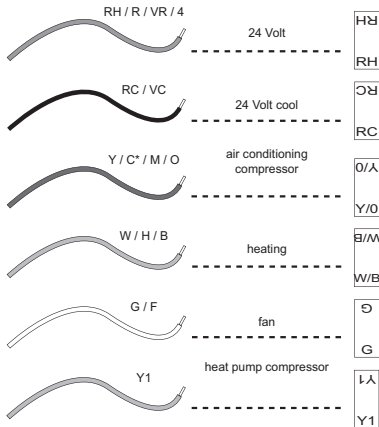
UNINSTALLING THE EXISTING UNIT

1. Turn the system power OFF from the existing thermostat. Turn the power to the HVAC system OFF at the main power panel or at the furnace.
(Failure to turn off the power to the existing thermostat before removal could damage your system.)
2. Remove the existing thermostat cover to access the wires from the wall.
(Some thermostats may have multiple covers, screws or other locking devices that must be removed or disengaged. See page 8 for common examples.)
3. Locate, but do not disconnect the wires.
(If wires are not visible, they may be connected to the back of the wall plate. Some models may have doors that open to expose the wires and mounting screws.)

WIRE LABELS

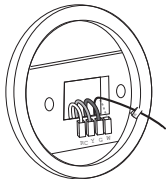
if your existing thermostat
is marked...

label the wire with
this sticker:



UNINSTALLING THE EXISTING UNIT, CONT.

- Using the provided stickers, label each wire according to the Wire Labels chart. (If the terminals are not labeled, contact a qualified HVAC technician.)

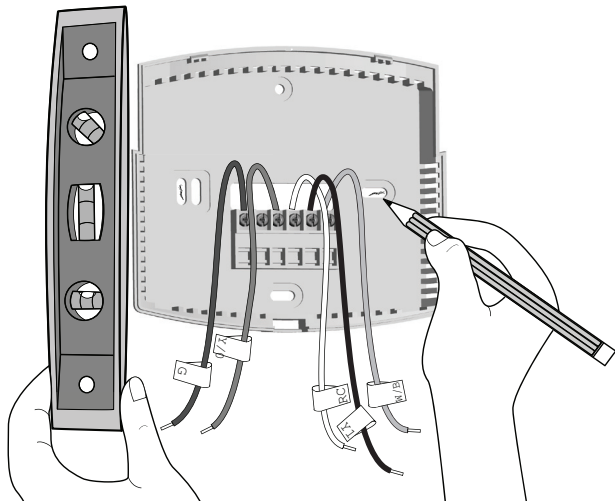


Note: Wire colors do not always comply with standards, so wire color should be ignored. Refer to the existing terminal designation for proper identification.

*If wires marked Y & C are both present, C may be a Common wire and should not be used. If you have a wire marked C, do not connect it to any terminal. This wire is used only for non-battery powered thermostats.

- Do not let the wires slip back into the wall during disconnection. You may want to secure the wires to the wall as you disconnect them. After all wires are labeled, disconnect each wire and remove the existing wall plate.

(Any unused wires should be capped with an approved electrical connector, such as electrical tape.)

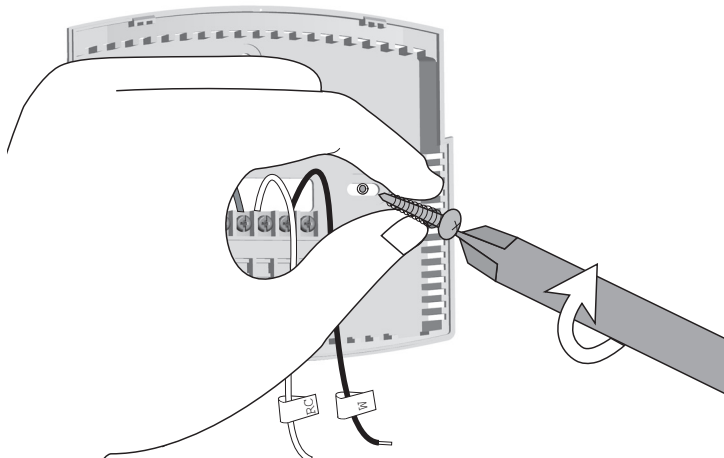


12

INSTALLING THE THERMOSTAT

INSTALLING THE WALL PLATE

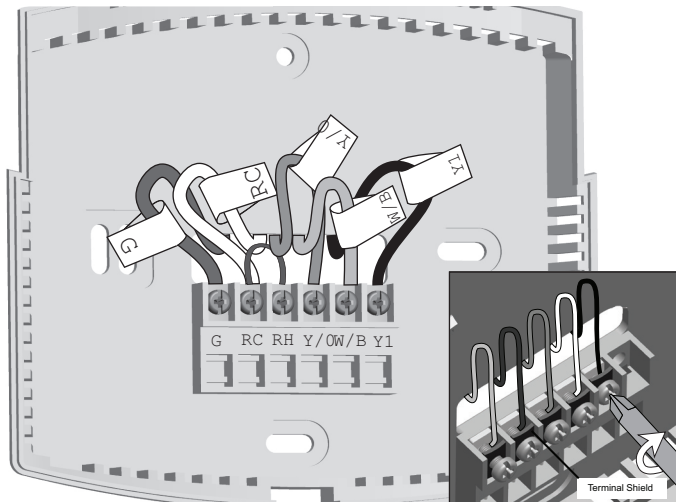
1. Remove the wall plate from the new thermostat by pressing the release tab on the bottom of the thermostat.
2. Position the new wall plate on the wall and pull the labeled wires through the opening.
3. If the existing holes do not match those on the Hunter wall plate, or if there are no existing holes, visually level the wall plate and mark the wall for two holes.



14

INSTALLING THE THERMOSTAT, CONT.

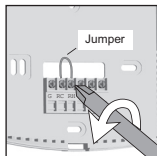
4. Remove the wall plate and drill two 3/16" holes where marked.
5. Tap the plastic anchors into the holes until they are flush with the wall. (Do not use plastic anchors if you encounter a stud in the wall.)
6. Reposition the wall plate on the wall, pulling the wires through the opening. Insert the mounting screws through the wall plate and into the anchors. Verify that the wall plate is visually level and securely tighten both screws.



16

INSTALLING THE THERMOSTAT, CONT.

CONNECTING THE WIRES



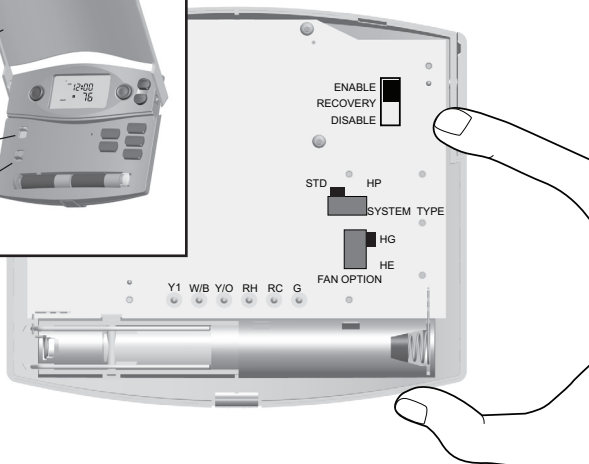
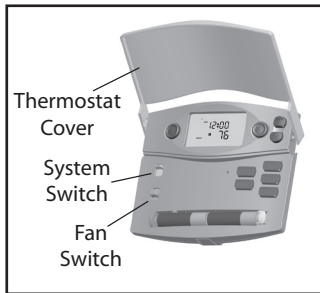
1. Loosen, but do not remove, the terminal screws.

Note: A jumper has been provided, connecting the RC and RH terminals for systems that do not provide both an RH and RC wire. If you have both an RH and RC wire, remove this jumper. If you do not have both an RH and RC wire, leave the jumper in place.

2. Match and connect the wires from the wall to the terminals as shown. Wires should be inserted behind the black terminal shields. Tighten each screw after the connection has been made.

(The ends of any extra wires should be individually wrapped in electrical tape and carefully pushed back into the wall.)

3. Push any excess wire length back into the wall to prevent interference.

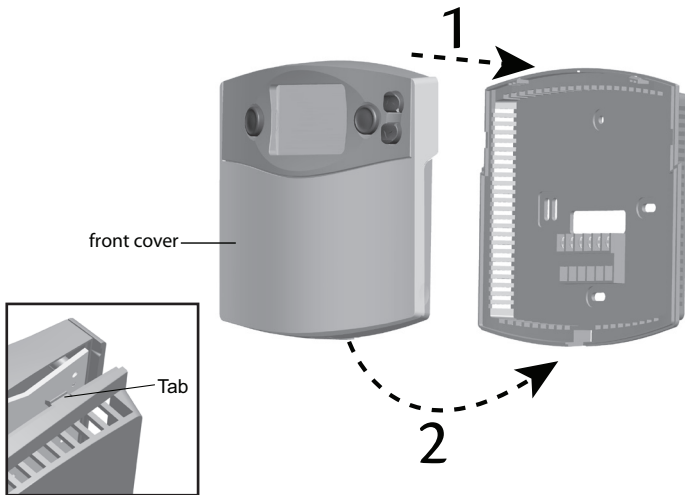


INSTALLING THE THERMOSTAT, CONT.

ATTACHING THE THERMOSTAT

Lift the thermostat cover and set the **SYSTEM** switch to **OFF** and the **FAN** switch to **AUTO**.

1. Fan option - Locate the **HE/HG** switch on the back of the thermostat. Set the switch to **HG** (default) for gas furnace and oil burners. Set the switch to **HE** for electric furnaces. (The switch has no effect when the system is set to cooling mode.)
2. Recovery - Locate the **AUTO RECOVERY** switch on the back of the thermostat. If you wish to use the Auto Recovery feature, verify that the switch is in the **ENABLE** position. If you do not wish to use this feature, simply change the switch to the **DISABLE** position. See pages 44-45 for more information.
3. System type - Locate the **SYSTEM TYPE** switch on the back of the thermostat. Select either **STD** (Standard) or **HP** (Heat Pump) to match your system.



INSTALLING THE THERMOSTAT, CONT.

4. Place the top of the thermostat over the two tabs on the wall plate. Press the thermostat onto the wall plate and press to snap the bottom tab into place.

Note: Do not force the thermostat onto the wall plate, as the terminal pins may be damaged. If the thermostat does not snap into place properly, the unit may not work.

5. Lift the front cover and insert two AA alkaline batteries.
6. Restore power at the electrical panel or furnace.



22

SETTINGS

The default setting of the thermostat is Fahrenheit (F⁰).

(NOTICE: CHANGING THIS SETTING WILL RESET THE THERMOSTAT TO FACTORY DEFAULT PROGRAMS.)

To change to Celsius (C⁰):

1. Press and hold the UP button.
2. Use a paperclip to press the RESET button.
3. Continue to press the UP button, but release the Reset button when the LCD turns on.

To reset the unit to F, press only the RESET button.



24

SETTINGS, CONT.

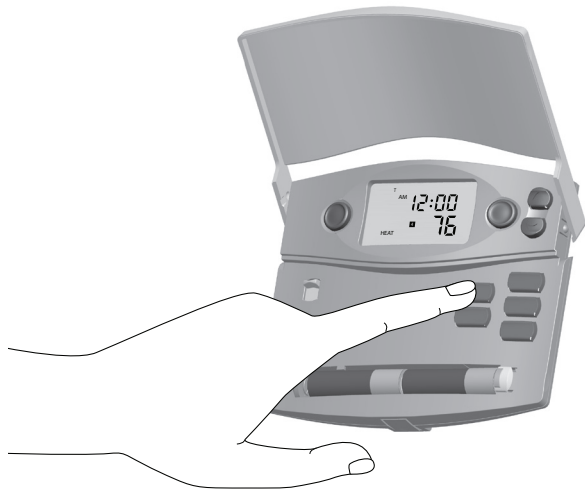
The default for this thermostat setting is in a 12 hour format. You can change the format to 24 hour format by pressing **DAY/TIME** and then **PROGRAM**.

The AM/PM indicator will be off when the thermostat is in 24 hour mode.

Setting day and time:

1. Press **DAY/TIME**. (AM/PM and current hour will flash)
Press **UP** or **DOWN** to adjust the setting.
2. Press **DAY/TIME** again to adjust the minute setting.
Press **UP** or **DOWN** to adjust the setting.
3. Press **DAY/TIME** again to adjust the day of the week.
Press **UP** or **DOWN** to adjust the setting.
4. Press **DAY/TIME** to return to the normal display.
Press **UP** or **DOWN** to adjust the setting.

You may also press Hold/Return at any time to return to the normal display.



26

METHODS OF OPERATION

This thermostat gives you the ability to program up to 4 custom temperature settings per day or utilize pre-programmed settings.

For manual operation / override instructions, see pages 28-35.

To utilize the pre-programmed settings, see pages 36-37.

To create custom programs, see pages 38-41.



28

METHODS OF OPERATION (CONT.)

1. MANUAL OPERATION / OVERRIDE

Many people prefer to operate their thermostats manually, adjusting settings as needed. You can either temporarily override the settings for the current program, or permanently override all settings and adjust temperatures manually.

If you want to only override the current program:

1. Press and hold **UP** or **DOWN** for one second to enter Manual Override mode. (Release the button when the display flashes.)
2. Press the **UP** or **DOWN** buttons to adjust the temperature setting as desired.

The system will revert back to the program at the next scheduled program time.



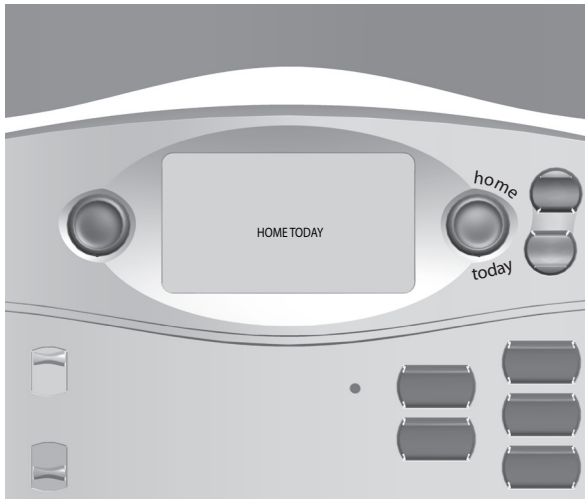
30

METHODS OF OPERATION

2. PERMANENT OVERRIDE

If you want to permanently override all settings and adjust the thermostat manually:

1. Press **HOLD/RETURN** until the Hold icon appears.
2. Press and hold **UP** or **DOWN** for one second to enter Manual Override mode. (Release the button when the display flashes.)
3. Press the **UP** or **DOWN** buttons to adjust the temperature setting as desired.
4. Press and release **HOLD/RETURN** to return to the normal display.



METHODS OF OPERATION

3. HOME TODAY OVERRIDE

Overrides the programmed settings during a time you would not normally be home.

Pressing Home Today during the first or second programs of the day will override the programs until the fourth program begins.

The thermostat will then go back into Normal mode.

Pressing Home Today during the third program of the day will override the programs until the first program of the next day.

Press **HOME TODAY** to enter or exit the program override. The "Home Today" message will flash on the screen and the program number will disappear. The highest or lowest schedule of the program will appear for you to adjust. Press **UP** or **DOWN** to adjust the temperature.



METHODS OF OPERATION

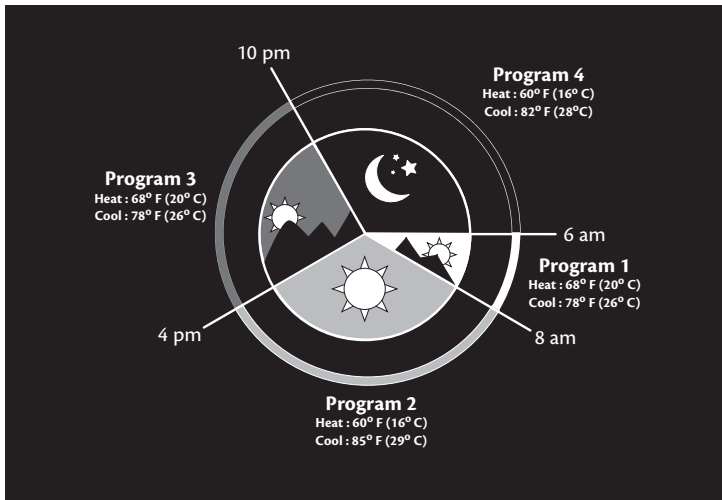
4. VACATION OVERRIDE

Overrides the programmed settings for a set amount of days.

The first number in Vacation Override mode indicates the number of days you wish to hold the temperature for, and the temperature beside it indicates the temperature you want to be held during those days. The first day you set the Vacation Override feature will be counted as day one in your number of days. The thermostat will resume your normal programs during program four, the last day of the override.

Press and hold the **hold** button until your time changes to a number with a temperature beside it. Use **day/time** to adjust how many days to override the temperature, and the **up/down** arrows to set the temperature it should hold. During Vacation Override the **VACA** will cycle with the time.

DEFAULT PROGRAMS CHART

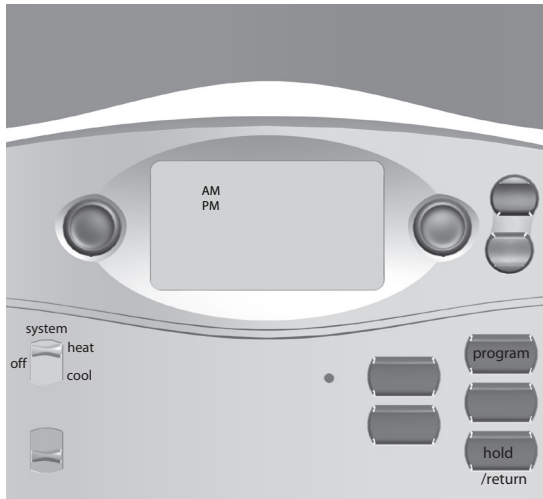




5. DEFAULT PROGRAMS

By using the pre-programmed settings, this thermostat can save you money by optimizing energy usage in heating and cooling.

Refer to the Default Programs Chart for detailed information about the pre-programmed settings.



38

METHODS OF OPERATION

6. CREATING CUSTOM PROGRAMS

- Program times can be set in 10 minute increments.
 - Program temperature can be set in increments of 1° F (1° C).
 - After 15 seconds of inactivity during programming, the thermostat will return to Normal Display mode.
 - When setting each program time, note the AM/PM indicator.
 - Press **HOLD/RETURN** at any time to exit Program mode and save your settings.
 - During normal operation, if no button is pressed for 5 seconds, the unit will return to the Normal Display mode.
1. Slide the **SYSTEM SWITCH** to **HEAT** or **COOL** to program the corresponding system.
 2. Press **PROGRAM** to enter Program mode. (The LCD will begin to flash)



40

METHODS OF OPERATION

3. Press **UP** or **DOWN** to change the hour. Press **PROGRAM** to save the hour and adjust the minute setting.
4. Press **UP** or **DOWN** to change the minute. Press **PROGRAM** to save the minute setting and adjust the temperature.
5. Press **UP** or **DOWN** to change the temperature. Press **PROGRAM** again to move to the next program number.
(There are 4 programs per day. If you do not wish to assign 4 programs per day, set up to 4, keeping in mind that the total program time must equal 24 hours.)
6. Repeat steps 2-5 for the remaining days.
7. To review your program settings, press **PROGRAM** repeatedly to review the customized programs.
(You can make changes at any time when the thermostat is in Program mode.)
8. Slide the **SYSTEM SELECTOR SWITCH** to the opposite position and repeat steps 2-5.



42

ICONS AND FEATURES

1. INDIGLO[®] night-light - will backlight the display for easy viewing in the dark. Press any button to illuminate the light.

(If no button is pressed after 5 seconds, the backlight will turn off.)

Note: If the thermostat shows a Low Battery Warning, the backlight will not operate. Follow the instructions on pages 42-43 to change batteries.

2. Filter change indicator - will flash after 400 hours of system use as a reminder to check or change your filter. Press and hold the FILTER button for 3 seconds after changing the filter to reset the filter timer.

(Pressing the Filter button for less than 3 seconds will cause the Filter change indicator icon to appear. The filter timer will not be affected unless the button is held for more than 3 seconds.)

Note: Clearing the Filter counter will also clear the Energy counter. See pages 50-51 for more information.



ICONS AND FEATURES, CONT.

3. Energy – calculates energy usage. Press to display the total operation time for heat and air conditioning for today, yesterday, last week, or Total. Monitoring energy usage allows you to optimize energy savings.

Press **ENERGY** to cycle through Today, Yesterday, This Week, and Total (up to 999 hours and 59 minutes).

Press and hold **ENERGY** until the display blinks to reset the counter.

Note: Clearing the Energy monitor counter will also clear the Filter counter.

4. Daylight savings time - allows for an easy transition during daylight savings time.

Press **DAY/TIME**, then **UP** or **DOWN** to enter daylight savings time mode and adjust as needed.



46

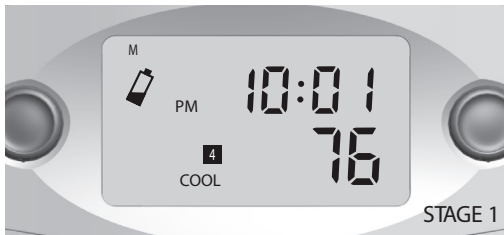
ICONS AND FEATURES, CONT.

5. Span setting mode – allows you to adjust the system ON/OFF cycle rate. The default setting is 2 (the system cycles ON or OFF when the temperature is within 1^o F (0.5^o C) above and below the set temperature.) The span setting can be adjusted if your system is cycling too fast or too slowly.

Press and hold both the UP and DOWN buttons until the word SPAN appears. Use the UP or DOWN button to adjust the span setting.

(Up will increase your cycle time by allowing the system to run longer; Down will decrease your cycle time by causing the system to run for a shorter length of time.)

Span settings remain the same for HEAT and COOL system settings. When batteries are installed, or the unit is RESET, the span cycle will revert to 2.



ICONS AND FEATURES, CONT.

6. Low battery warning – indicates two stages of battery power shortage.

When the batteries are detected as weak, the icon will flash until new AA alkaline batteries are installed (Stage 1). If the batteries become too weak for normal operation, the thermostat enters the second battery power shortage mode (Stage 2). When insufficient battery power is left, the battery icon will flash alone on the display and your system will turn off. The display will be blank when no battery power is left. The system will remain off until new batteries are installed.

(Your programs and time settings will be lost if the batteries are not replaced within one minute.)

The thermostat will resume normal operation after new batteries are installed.



50

ICONS AND FEATURES, CONT.

7. Auto recovery – allows heating and cooling systems to gradually recover from an energy-saving setpoint temperature to a comfort setpoint temperature. Auto recovery calculates the time needed to adjust the temperature to the next program setting. When the thermostat is in Auto Recovery mode, the display will flash alternating messages of RECO and the time. Auto Recovery can be disabled by sliding the recovery switch on the back of the circuit board to the disable position.

(Auto Recovery will not operate if Permanent or Temporary holds are on.)

Press **HOLD/RETURN** during the Auto Recovery process to manually cancel the recovery.



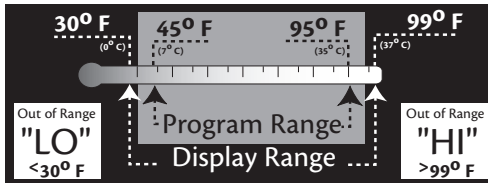
ICONS AND FEATURES, CONT.

8. Error mode – indicates an unexpected battery problem. The screen will flash an ERR message and shut your system off until the batteries are replaced with new AA alkaline batteries. You must Reset and reprogram the thermostat after replacing the batteries if the thermostat has entered Error mode.
9. Auto cut off – automatically turns the system off if the temperature rises above 95⁰ F (35⁰ C) or drops below 40⁰ F (4⁰ C).

(If your HVAC system has malfunctioned, the system will no longer respond to thermostat controls and the Auto cut off will have no effect.)

IMPORTANT FEATURES

1. Temperature Range



2. Compressor Protection



After the system stops running in cooling mode, there will be a 3.5 minute delay before it can be restarted to prevent compressor damage due to rapid cycling.

3. Resetting the unit

reset



To restore the thermostat to the original factory settings, press the reset button with a paperclip. (This will erase any user-programmed settings.)

TROUBLESHOOTING

1. My display will not come on.
 - 1 a. Check batteries and battery connections.
 - 1 b. Reset the thermostat.

2. The auto fan feature will not operate properly.
 - 2 a. Remove the thermostat from the wall plate and set the HG/HE switch to the correct position.

3. My display is erratic.
 - 3 a. Reset the thermostat and reprogram your settings.

4. The program will not change at my desired setting.
 - 4 a. Check that the time is set properly to AM or PM.
 - 4 b. Make sure the thermostat is not in permanent override mode.
 - 4 c. Check that the day setting is correct.

TROUBLESHOOTING

5. My heating or cooling will not turn on or off.
 - 5 a. Check the Heat/Cool function switch to ensure it is set to the desired position.
 - 5 b. Wait. There may be as much as a 4-minute delay before the system turns on or off to protect the compressor.
 - 5 c. Check the circuit breakers and switches to ensure there is power to the system.
 - 5 d. Replace the batteries.
 - 5 e. If applicable, make sure the furnace blower door is closed properly.
 - 5 f. If your system has 4 wires, ensure the jumper wire is installed between the RC and RH terminals.
 - 5 g. Check your system for proper wiring.
-
6. The display will come on, but it will not stay illuminated.
 - 6 a. Replace batteries.

TROUBLESHOOTING

7. My system continues to operate when the thermostat is in the off position.

7 a. Replace unit.

7 b. Check your system for proper wiring.

.....

8. The LCD screen permanently reads HI, LO, or ERR.

8 a. Replace unit.

.....

9. How do I just operate my thermostat manually?

9 a. Manual operation instructions are on pages 28-31.

Is there help on the web?

Yes. Visit <http://www.hunterfan.com> for more information.

.....

Can't I just call someone?

Sure. The Hunter Technical Support Group is available from 7 am to 7 pm CST M-F and 8 am to 5 pm Saturday. They may be reached toll-free at 1-888-830-1326.

Hunter[®]

58

Free Manuals Download Website

<http://myh66.com>

<http://usermanuals.us>

<http://www.somanuals.com>

<http://www.4manuals.cc>

<http://www.manual-lib.com>

<http://www.404manual.com>

<http://www.luxmanual.com>

<http://aubethermostatmanual.com>

Golf course search by state

<http://golfingnear.com>

Email search by domain

<http://emailbydomain.com>

Auto manuals search

<http://auto.somanuals.com>

TV manuals search

<http://tv.somanuals.com>