



**DAH-1100**

**USB  
Combo  
User Manual**

- Direct -Connect USB Flash  
MP3 Player with Graphic LCD

 Hyun Won Inc.



## Safety Instructions

### ► Warning

- To reduce danger of fire or electric shock, do not expose the product to rain or moisture.
- Do not release or distribute the music files formatted in WMA or MP3 from the product to the public. (As this would violate Copyright laws.)  
The software contained on the installation CD-ROM is for personal use only and it not to be distributed.

### ► To maintain best quality from the player

- Do not use the product in hazardous conditions, such as extremely high/ low temperatures, dusty area, or excessively wet areas.
- Do not leave the product in the bathroom, near/ on a heater, or in a car parked in the direct sunlight.
- Do not leave batteries in pockets with any metallic substance such as coins or keys. (Doing so may cause fire from the batteries contacts)
- Throwing or dropping the product can cause shock damage.

### ► Avoid sudden shock

- Any data lost due to careless use is not our responsibility.  
(Any valuable data should be stored on your PC)

### ► Caution when using headset

- Auditory sense may be damaged when listening to the music at a high volume for extended time periods.
- Using a headset while driving a car or riding bicycle/motorcycle is not recommended.
- Use caution when walking or jogging with device.
- Ear-in type headset should have a long wire to be located at the back of the neck.
- Do not ever disassemble to repair or rebuild the product as it may cause permanent damage.

## Feature and Capacity of Products

### Feature

- Digital Audio Player which supports multi-format
  - 1) MP3: 8~320Kbps 2) WMA: supporting over 8Kbps
- Graphic LCD and EL backlight.
- Multi Language Support. (Korean/English/Japanese/Chinese)
- Firmware upgrade by the Internet.
- Portable USB store equipment.
- low power consumption : It's possible to play 11 hours continuous playback.
- It provides a variety of Menu for suiting customer's taste.

### General specification

- Size(W x H x D) : 87 x14 x46 mm
- Shape LCD : Graphic LCD (128 x64)
- Built-in Nand Flash Memory (32MB/64MB/128MB)
- It implements the Key
  - Play : Turn on/off, Playback, Pause
  - FF : Forward
  - REW : Backward
  - Volume : Mute – Max ( 31 Steps)
  - Menu
- Equalizer : 5 different kinds EQ selection (Rock/Jazz/Classic/Pop/Flat)
- Repeat : Repeat One/ All, Random One/All/OFF
- Contrast : Control by Graphic
- Backlight : 0Sec ~ 20Sec
- Power Saving: 1Min~10Min
- About : Firmware Version/Memory information
- Language ; Korean / English / Chinese / Japanese
- Circumstances
  - It's used in Win98 / ME / 2000 / XP
- Note : Win98 is provided by the separate driver**

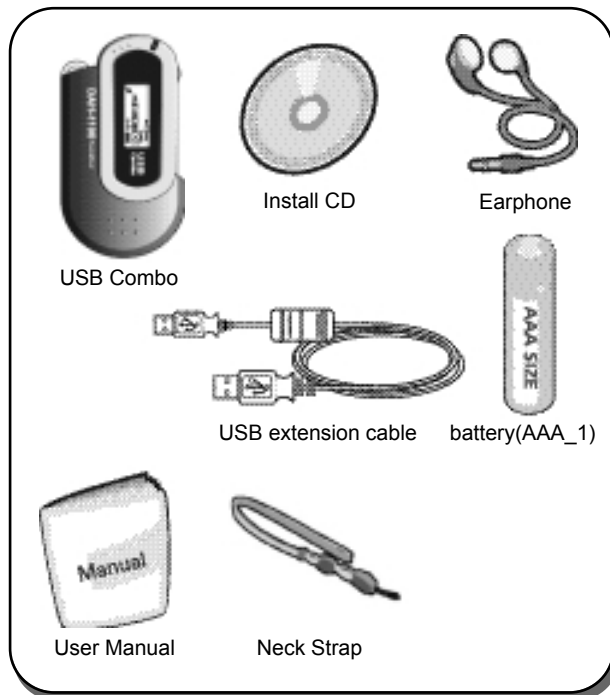
## USB Combo User Manual

### Contents

1. Confirm the contents .....	1
2. Look at the title of the each part .....	2
3. Put in the battery .....	3
4. Connect to the computer .....	4
5. File download/ upload .....	5
6. Separate from USB Combo .....	6
7. Look at the title of the part of LCD .....	7
8. Look at the basic function of the digital Audio Player .....	8
8.1 Turn on .....	8
8.2 Playback .....	8
8.3 Control the volume .....	9
8.4 Search for other song .....	9
8.5 Set up the section repetition .....	10
8.6 Set up the sound effect .....	11
8.7 Set up the section repetition .....	11
8.8 Set up the contrast .....	12
8.9 Set up the backlit .....	12
8.10 Set up the power saving .....	13
8.11 See the registration information .....	13
8.12 Select the language .....	14
8.13 The Return .....	14
9. FM Radio mode .....	15
10. Use the lock .....	16
11. Install a software .....	18
12. Format .....	19
13. Upgrade the firmware .....	20
14. Troubleshooting Problems .....	21
15. WARRANTY SERVICE .....	22
16. FCC RF INTERFERENCE STATEMENT .....	23

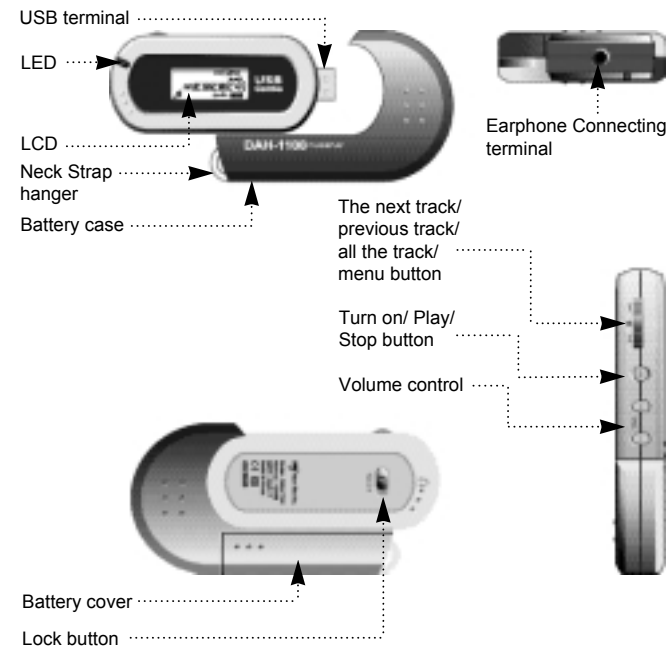
## 1. Confirm the contents

1



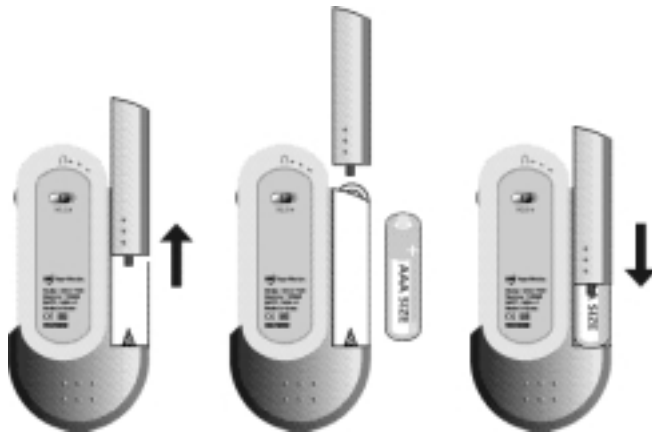
## 2. Look at the title of the each part

2



### 3. Put in the battery

3



Remove the battery cover by pushing the battery cover to an arrow direction.

Put in the battery adjusting to plus/minus polarity.

Push and close the battery cover to an arrow direction adjusting to the groove.

### 4. Connect to the computer

4



Pull and separate the battery case and USB drive to an arrow direction.

Connect to the USB drive. At this time you can use it by connecting to the USB extension cable or connecting to the computer.

Pull the USB drive which is correctly adjusted to the groove of the battery case.

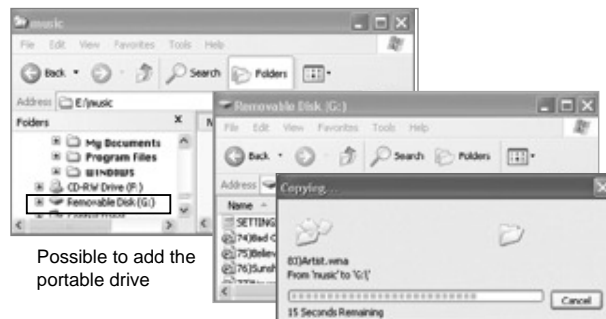
**Caution: If it's not exactly connect, it can not play.**

## 5. File download/upload

5

If USB drive connects to the computer, new portable drive is added. You can use it such as adding or deleting the data on the hard disk by Windows explorer

**Note: Music files(MP3, WMA) are just shown on LCD and the data files are shown on Windows explorer**



Possible to add the portable drive

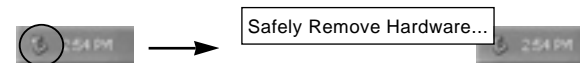
If USB drive connects to the computer, the message such 'USB Connected...' show up. The message such 'USB Connected...' and LED flicker during the transfer, otherwise they didn't flicker and then USB drive separate from the computer.

**Caution: The file is damaged or the cause of the product problem if the USB drive separate from the computer while the file is transferring.**

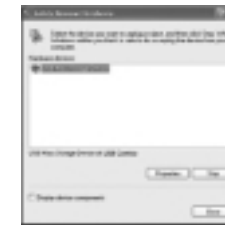
**USB Connected...**

## 6. Separation from USB Combo

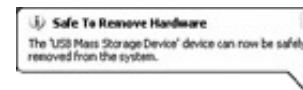
6



First, you click Left button on device manager from property menu. then "Safely Remove Hardware" will display. Click it with Right button.



Click 'stop(S)' button.



After you click 'Safe To Remove Hardware' you separate USB drive.

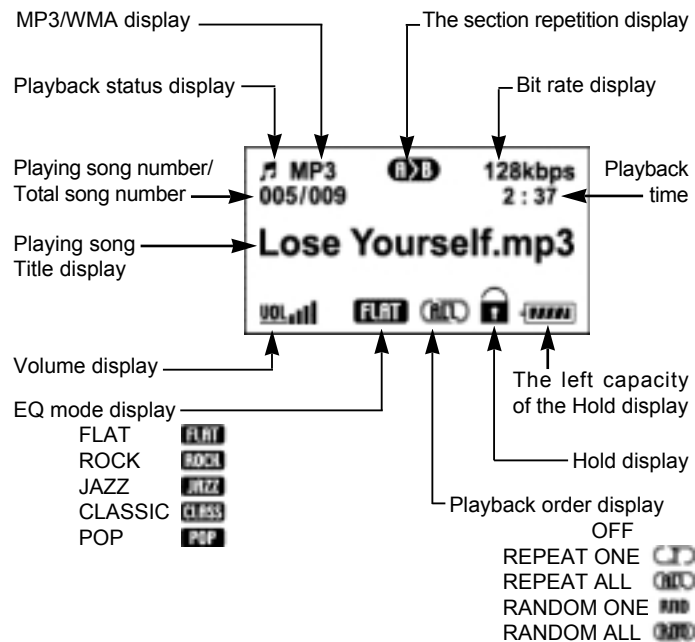


After you select USB Combo MSC USB Device, you click 'OK'.

**Caution : If you don't separate USB drive safely, the file can be damaged or the data should be lost.**

## 7. Look at the title of the part of LCD

7



## 8. Look at the basic function of the digital audio player

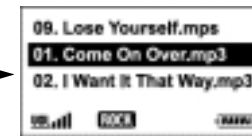
8

### 8.1 Turn on

Push 'Playback/ Stop' one round



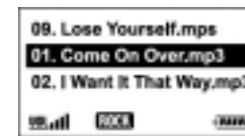
You can see the logo when LCD is turned on.



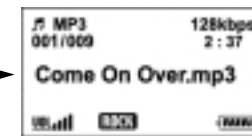
The status of stop scene of LCD.

### 8.2 Playback

Push 'Playback/Stop' for the first scene



A stop mode.



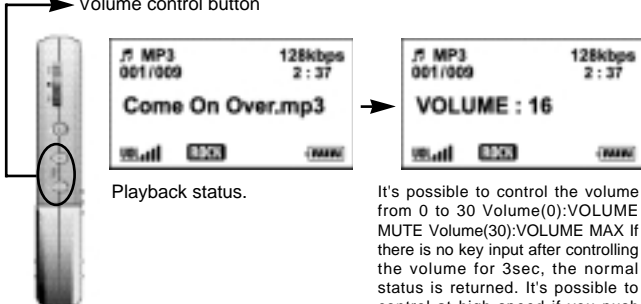
The title of the song is scrolled.

## 8. Look at the basic function of the digital audio player

9

### 8.3 Control the volume

Volume control button

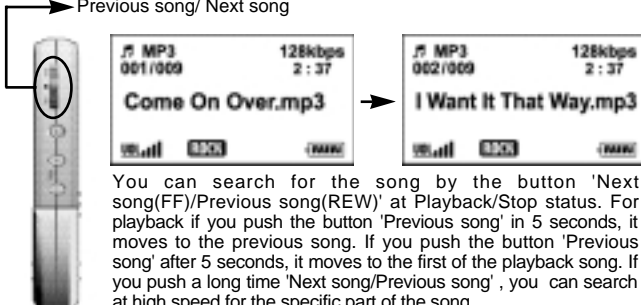


Playback status.

It's possible to control the volume from 0 to 30 Volume(0):VOLUME MUTE Volume(30):VOLUME MAX If there is no key input after controlling the volume for 3sec, the normal status is returned. It's possible to control at high speed if you push 'Volume Control'

### 8.4 Search for other song

Previous song/ Next song



You can search for the song by the button 'Next song(FF)/Previous song(REW)' at Playback/Stop status. For playback if you push the button 'Previous song' in 5 seconds, it moves to the previous song. If you push the button 'Previous song' after 5 seconds, it moves to the first of the playback song. If you push a long time 'Next song/Previous song' , you can search at high speed for the specific part of the song

## 8. Look at the basic function of the digital audio player

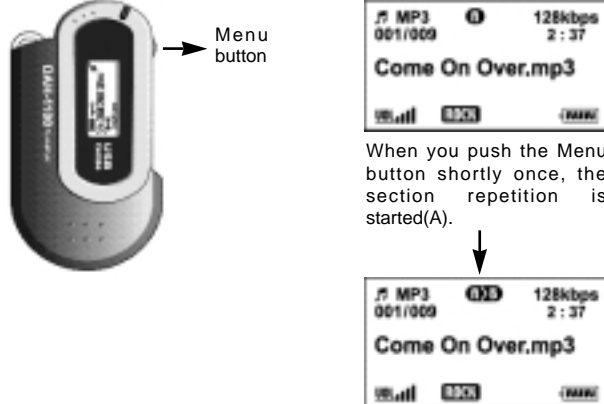
10

### 8.5 Set up the section repetition

#### What's the section repetition?

It's the function that you want to listen to the specific part repeatedly It's easy to listen repeatedly for the language studying.

Menu button



When you push the Menu button shortly once, the section repetition is started(A).

When you push the Menu button shortly once more, the section repetition is ended(B)

**Note:** For closing the section repetition you push the Menu button shortly once or you operates the button in the direction of the next song/previous song. When it turns next song it will finish repeat automatically.



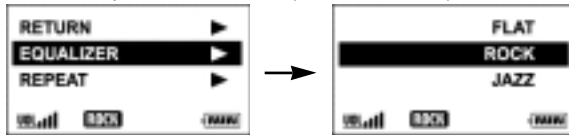
## 8. Look at the basic function of the digital audio player

11

### 8.6 Set up the sound effect

#### What's the sound effect?

It's the function that you want to listen to the specific sound with emphasis.



If you push the Menu button with long (over 700ms), the function of Menu is returned. After searching the sound effect using the 'Next song/previous song' you push the Menu button with short (below 700ms). After choosing sound effect, press menu button for a while it will return to play/stop. If there is no key input for 7 seconds, the 'Playback/stop' is operated (ROCK/JAZZ/CLASSIC/POP/FLAT)

### 8.7 Set up the section repetition

#### What's the section repetition?

It's the function that the playback order is arranged.

OFF->Total song playback once in stored order

REPEAT ONE->The present song playback unlimitedly

REPEAT ALL->The files are playback in stored order and repeatedly

RANDOM ONE->Total song playback once without order

RANDOM ALL-> Total song playback without order and repeatedly



After searching the repeat function using 'Next/Previous song' at Menu, you push Menu button with short. After beginning the repeat function, you search the repeat function using 'Next/Previous song'. If you push the menu button with long, 'Playback/Stop' is operated. In the case of no input over 7sec 'Playback/Stop' is operated. (OFF/REPEAT ONE/REPEAT ALL/RANDOM ONE/RANDOM ALL)

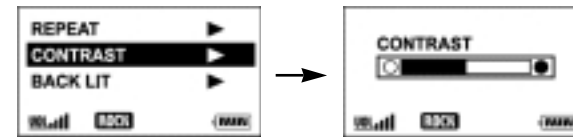
## 8. Look at the basic function of the digital audio player

12

### 8.8 Set up the contrast

#### What's the contrast?

It's the function that the shade of the screen is controlled.

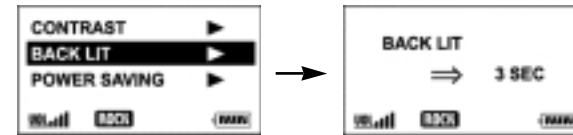


After searching the brightness using 'Next song/previous song' at Menu you push 'Menu' button with short. After beginning the brightness you control the brightness using 'Next song/Previous song'. If you push the menu button with long, 'Playback/Stop' is operated. In the case of no input over 7sec 'Playback/Stop' is operated.

### 8.9 Set up the backlit

#### What's the lightening?

It's the function that the LCD is clear at the dark place. If you push the button, it's operated



After searching the lightening using 'Next song/previous song' at Menu you push 'Menu' button with short. After beginning the lightening you control the lightening time using 'Next song/Previous song'. If you push the menu button with long, 'Playback/Stop' is operated. In the case of no input over 7sec 'Playback/Stop' is operated. (It's possible to set up from 0 to 20sec)

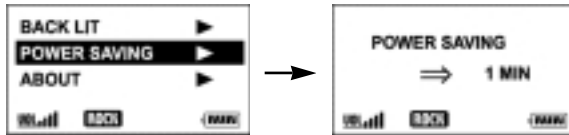
## 8. Look at the basic function of the digital audio player

13

### 8.10 Set up the power saving

#### What's the power saving?

It's the function that the player is turned off at the no input.



After searching the lightening using 'Next song/previous song' at Menu you push 'Menu' button with short. After beginning the power saving you control the power saving time using 'Next song/Previous song' If you push the menu button with long, 'Playback/Stop' is operated. In the case of no input over 7sec 'Playback/Stop' is operated. (It's possible to set up from 1 to 10min)

### 8.11 See the registered information

#### What's the registered information?

It's the function that you confirm the firmware version and total memory.



After searching the registered information using 'Next song/previous song' at Menu you push 'Menu' button with short. If you push the menu button with long, 'Playback/Stop' is operated. In the case of no input over 7sec 'Playback/Stop' is operated.

## 8. Look at the basic function of the digital audio player

14

### 8.12 Select the language.

#### What's the select of the language?

It's the function that you select and use the language classified by nation.

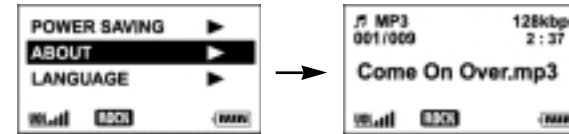


After searching the Language using 'Next song/previous song' at Menu you push 'Menu' button with short. After beginning the language you select the used language using 'Next song/Previous song' If you push the menu button with long, 'Playback/Stop' is operated. In the case of no input over 7sec 'Playback/Stop' is operated. (ENGLISH/KOREAN/CHINESE/JAPANESE)

### 8.13 The Return

#### RETURN ?

It's the function that the normal state is returned after completing of the setting.

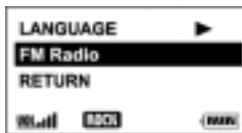


After searching the return using 'Next song/previous song' at Menu you push 'Menu' button with short. If you push the menu button with long, 'Playback/Stop' is operated. In the case of no input over 7sec 'Playback/Stop' is operated.

## 9. FM Radio mode

15

- Choose F.M Radio on the menu item and Press "Menu" button quickly once to get in F.M. Radio mode.
- Press button for long time or if there's input, player go back to play/pause mode.



### 1. Change preset

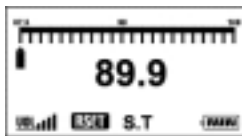
- Use "FF/REW" switch to change preset.

### 2. Find preset

- Use "Vol +/-" button to find channel.

### 3. Auto channel find

- Press menu button quickly once in the seek mode to find radio channel automatically.



### 4. Manual channel find

- Use "FF/REW" switch to find radio channel in the seek mode.
- Press "FF/REW" switch for long time to find radio channel automatically.



### 5. Save preset

- Find channel in the seek mode and select preset to save with "Vol +/-" button. Then press "Play" button to get in save mode and save radio channel on the selected preset.

### 6. Volume control in the F.M. Radio mode

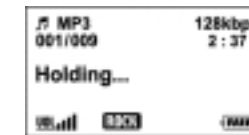
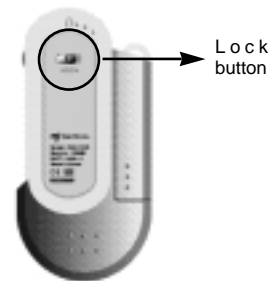
- Seek mode : Press "Vol +/-" button for long time to change volume
- Save mode : Same as music mode

## 10. Use the lock

16

### What is a lock device?

It is a device for preventing the user from operating a button by mistake.



When the lock button moves to the direction of an arrow, you can show the lock indication with a sparkling 'holding...' message

**Note:** After using a lock device, you cannot operate the machine even using any buttons. Especially, when you power on in the lock state, it is not operate.

## 11. Install a software

17

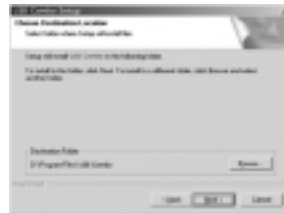
The customers who use a window 98/98SE should install a software and use this machine. The customer who use a window ME/XP/2000 need not to install a software.



Double click a Setup.exe file after inserting a CD into the CD ROM



Click the Next button



Click the Next button

\* Please see the next page



Click the Yes button

## 11. Install a software

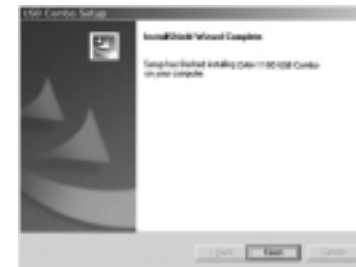
18



Click the Next button



We are going to the next step.



Click the finish button The software installation is completed.

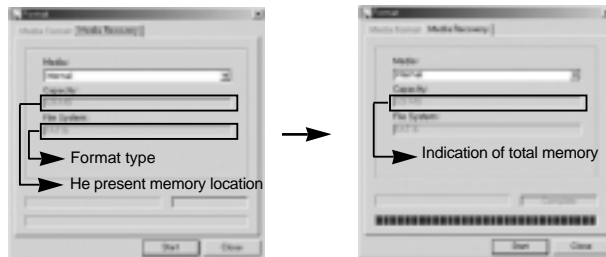
## 12. Format

19

**Caution:** In the case of a format, the user of window 98/98SE/ME/XP/2000 should install a software provided by the company. In the case of using an existing format of computer such as FAT32, NTFS, it is possible that this machine does not operate normally. Before the format, you had better backup. The separation of a USB drive from the computer during the format process may result in product trouble.

To upgrade a firmware, you should wait for about 10 seconds with pushing a play/stop button and connecting before connecting a USB drive to the computer.

**Note:** If the start button is not activated after executing an upgrade software, it shows that the USB drive is not connected normally. (In this case, you should reconnect the USB drive)



Start->program->USB Combo->Format

Push the start button. After finishing the memory format, you can complete with the close button.

**Note:** After completing the format, you should reconnect the USB drive to PC to use normally.

## 13. Upgrade the firmware

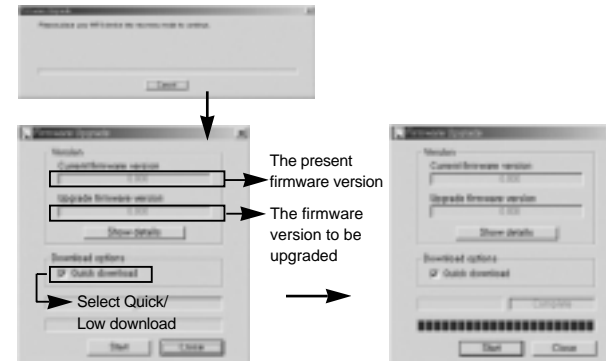
20

**Caution:** You had better not use the upgrade because it can damage to the machine. The customer who wants a firmware upgrade can upgrade by downloading a latest version in our homepage (<http://www.m-any.com>). Before the upgrade of firmware, you had better backup the important file.

To upgrade a firmware, you should wait for about 10 seconds with pushing a play/stop button and connecting before connecting a USB drive to the computer.

Start->program->USB Combo->Firmware Upgrade

Push the start button. After finishing the memory Firmware Upgrade, you can complete with the close button.



**Note:** In the case of the progress bar's not being proceeded in the above figure, it shows that the USB drive is not connected normally. In this case, push the play/stop button after disconnecting a USB drive with PC and reconnect the USB drive to the PC.

## 14. Troubleshooting Problems

21

**If you encounter any of the problems listed below, follow the suggested solutions.**

- 1.No Power.
  - Is the battery inserted correctly?
  - Is hold switch OFF?
  - Is the player combined with USB credle?
  - Is the battery empty?
- 2.No Playback.
  - Check if the files are in MP3 or WMA format.
- 3.No Sound.
  - Is the volume level adjusted?
  - Is the earphone properly connected?
- 4.Broken characters appear in the LCD Screen.
  - Check if the Language settings is connect in the Menu item.
- 5.Firmware upgrade function does not work.
  - Check your internet connection.

## 15. WARRANTY SERVICE

22

Customers are entitled to warranty service for a period of one year from the date of purchase. Warranty service does not apply to defects resulting from customer fault or acts of God.

Non-warranty service shall apply to defects resulting from:

1. Infiltration of foreign matter, such as water, liquid, or sand.
2. Breakage due to dropping or severe impact.
3. Damage to or deformation of the outer case caused by organic solvents, such as benzene.
4. Use of parts other than those certified by the manufacturer.
5. Loss or breakage of any parts or components caused by unauthorized disassembly.
6. Repair or modification done by any persons other than manufacturer authorized personnel.
7. Acts of God, such as lightning, storm or flood.
8. Purchase from unauthorized retailers.

For more warranty information and service options, please visit the Hyunwon web site at <http://www.m-any.com>

## 16. FCC RF INTERFERENCE STATEMENT

23

### Note

This equipment has been tested and found to comply with the limits for a Class B digital device, pursuant to Part 15 of the FCC Rules. These limits are designed to provide reasonable protection against harmful interference in a residential installation.

This equipment generates, uses and can radiate radio frequency energy and, if not installed and used in accordance with the instructions, may cause harmful interference to radio communications. However, there is no guarantee that interference will not occur in a particular installation.

If this equipment does cause harmful interference to radio or television reception which can be determined by turning the equipment off and on, the user is encouraged to try to correct the interference by one or more of the following measures.

- Reorient or relocate the receiving antenna.
- Increase the separation between the equipment and receiver.
- Connect the equipment into an outlet on a circuit different from that to which the receiver is connected.
- Consult the dealer or an experienced radio, TV technical for help.
- Only shielded interface cable should be used.

Finally, any changes or modifications to the equipment by the user not expressly approved by the grantee or manufacturer could void the users authority to operate such equipment.

### **CAUTION**

Changes or modifications not expressly approved by the party responsible for compliance could void the user's authority to operate the equipment.

THIS DEVICE COMPLIES WITH PART 15 OF THE FCC RULES. OPERATION IS SUBJECT TO THE FOLLOWING TWO CONDITIONS: (1) THIS DEVICE MAY NOT CAUSE HARMFUL INTERFERENCE, AND (2) THIS DEVICE MUST ACCEPT ANY INTERFERENCE RECEIVED INCLUDING INTERFERENCE THAT MAY CAUSE UNDESIRE OPERATION.

## Free Manuals Download Website

<http://myh66.com>

<http://usermanuals.us>

<http://www.somanuals.com>

<http://www.4manuals.cc>

<http://www.manual-lib.com>

<http://www.404manual.com>

<http://www.luxmanual.com>

<http://aubethermostatmanual.com>

Golf course search by state

<http://golfingnear.com>

Email search by domain

<http://emailbydomain.com>

Auto manuals search

<http://auto.somanuals.com>

TV manuals search

<http://tv.somanuals.com>