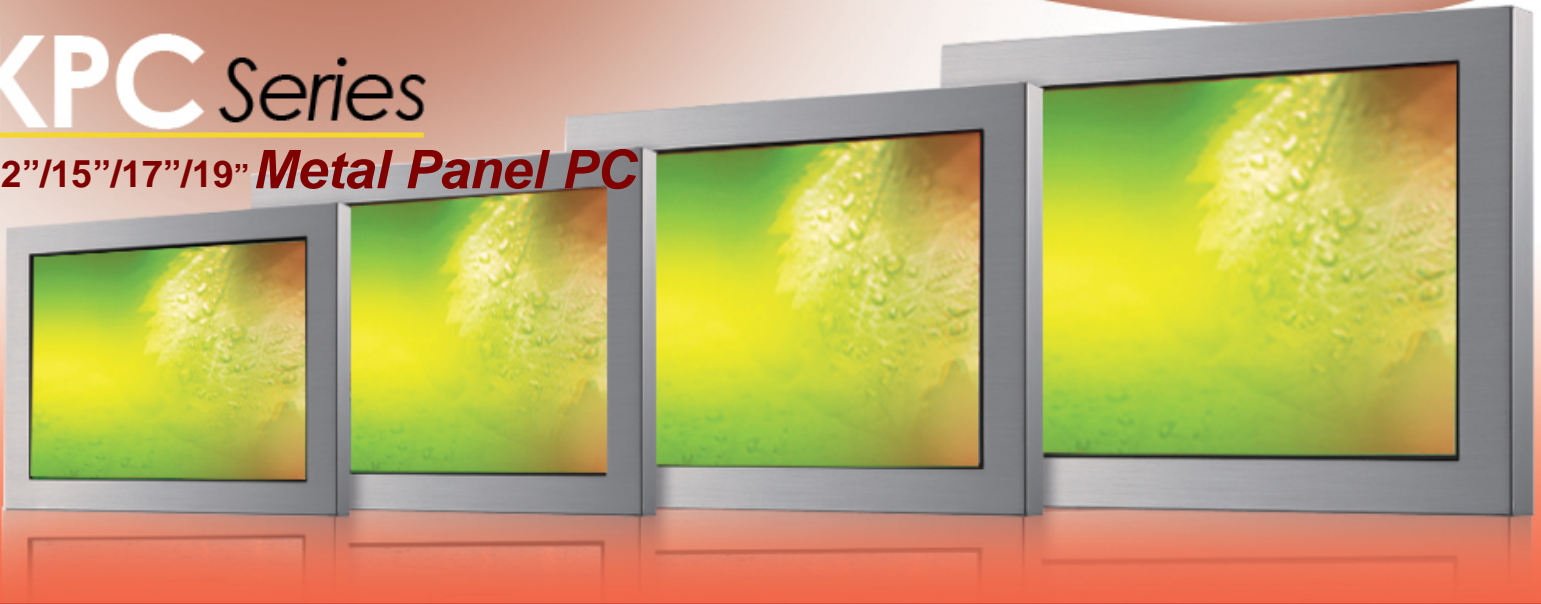


KPC Series

12"/15"/17"/19" Metal Panel PC



KPC series is an advanced metal Panel PC. Its ultra slim and exquisite metal enclosure catches most eye contacts. KPC series includes four different display sizes, 12", 15", 17" and 19" equipped with high brightness TFT panel and resistive / SAW /IR touch. NEMA 4 / IP 65 dust and water proof display front meets industrial application requirements.

Beside standard model, KPC series also derivate multiple different cabinet designs such as whole color painted sheet metal housing, complete stainless steel cabinet and panel mount model. Fanless and ventless or vandal proof design are also provided. For fitting different applications, KPC series designs with desktop stand, MSR, laser scanner and camera kits.

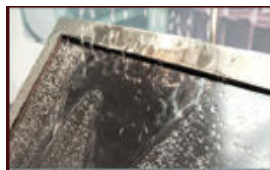
KPC series comprehensive product line is the best choice for digital signage, kiosk, e-home, KVS, healthcare, industrial automation, transportation, gaming and other applications.

Features

1. Ultra slim, 60 mm thickness.



2. Rugged metal housing and NEMA 4 / IP 65 dust & water proof display front.



3. Intel mobile technology supports multiple processors from Fanless ULV CPU to high performance Pentium M, core 2 dual.



4. Rich I/O ports provide excellent peripheral connectivity.



5. 12", 15", 17" & 19" wide range display size.



6. Slim HDD bay design for easy service.



KPC Series



Specification

Model Name	KPC1200		KPC1500	KPC1700	KPC1900
Motherboard	B78				
CPU Supports	Intel Celeron M 1.3 / 1.5GHz; Pentium M 1.8GHz				
Chipset	Intel 852GM and ICH4 FSB 400Mhz				
System Memory	2 x DDR SO-DIMM slot, up to 2 GB				
Graphic Memory	Share system memory max 64MB				
LCD / Touch Panel					
LCD Size	12" TFT LCD	15" TFT LCD	17" TFT LCD	19" TFT LCD	
Brightness	400nits	350nits	300nits	300nits	
Maximal Resolution	800 x 600	1024 x 768	1280 x 1024		
Touch Screen Type	Resistive touch	Resistive type / SAW touch / IR Touch			
Storage					
HDD	2.5" Slim HDD bay				
Flash Memory	Optional Compact Flash memory (without HDD)				
Expansion					
mini-PCI Slot	1 x support 802.11 a/b/g WLAN card				
PCI express	1 for B98 main board only				
External I/O Ports					
USB 2.0	4 x USB Type A				
Serial / COM	RJ-45 (COM1 standard RS-232; COM2 RS-232 / 422 / 485 selectable by jumper; COM3 & COM4 pin 9 with 5V or 12V power by jumper)				
Parallel	1 x D-sub 25F				
LAN (10 / 100)	1 x RJ-45				
Cash Drawer	1 x RJ-11 (12V or 24V)				
DC Jack	1 x Latch Type				
Audio Jack	1 x MIC-in, 1 x Speak-out				
2nd VGA	1 x DB 15F				
Internal Interface					
USB 2.0	2				
Audio					
Speaker	1 x 3W Speaker				2 x 3W Speakers
Power					
Power Adapter	DC 19V / 90W				
Environment					
EMC & Safety	FCC Class A, CE, LVD				
Operating Temperature	0°C ~ 40°C (32°F ~ 104°F)				
Storage Temperature	-20° ~ 60°C (-4°F ~ 140°F)				
Operating Humidity	5% - 95% RH non-condensing				
Storage Humidity	5% - 95% RH non-condensing				
Dust & Water Proof	NEMA 4 / IP 65 (front)				
Dimension (W x D x H)	331 x 265 x 55 mm 13" x 10.5" x 2.2"	386 x 308 x 60 mm 15.2"x 12.1"x 2.4"	411 x 345 x 60 mm 16.2" x 13.6" x 2.4"	449 x 374 x 60 mm 17.7" x 14.7" x 2.4"	
Weight	N.W. 4.7kgs / 10.4 lbs	N.W. 5.8 kgs / 12.8 lbs	N.W. 7.6 kgs / 16.7 lbs	N.W. 9 kgs / 19.8 lbs	
Mounting	100mm x 100mm Standard VESA / Panel Mount				
OS Support	Windows XP, WEPOS, XP Embedded, XP professional for Embedded, WIN 2000 professional Embedded, Linux				

Free Manuals Download Website

<http://myh66.com>

<http://usermanuals.us>

<http://www.somanuals.com>

<http://www.4manuals.cc>

<http://www.manual-lib.com>

<http://www.404manual.com>

<http://www.luxmanual.com>

<http://aubethermostatmanual.com>

Golf course search by state

<http://golfingnear.com>

Email search by domain

<http://emailbydomain.com>

Auto manuals search

<http://auto.somanuals.com>

TV manuals search

<http://tv.somanuals.com>